

# P34A SERIES TUBE-ICE MACHINE

## Self Contained P34A (Ammonia)



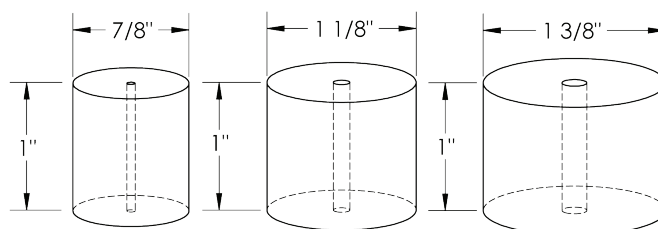
The P34A Series with a capacity of 50 tons of ice per day provides an alternative for producing large quantities of ice without the need of a central refrigeration plant. Available as a self contained water cooled machine for operation with ammonia refrigerant, the P34A will provide you with many years of dependable service.

Heavy-duty industrial construction, automatic operation, energy efficiency and the best warranty in the business make the Vogt P34A Series the only "clear" choice for your ice making needs.

### P34A Standard Features:

- ★ Self Contained Packaged Unit
  - ★ Factory Tested and Certified
  - ★ 25 Year Evaporator Warranty
  - ★ Voltage - 460v.,3p.,60hz
  - ★ Allen-Bradley PLC with thermocouples, pressure transducers and multiple built-in safeties
  - ★ 10.1" wide HMI display with remote access capability\*
  - ★ Control Voltage - 230v.,1p.,60hz (transformer included)
  - ★ UL 508A Industrial Control Panel
  - ★ Compressor Soft Start
  - ★ Ammonia Refrigerant
  - ★ Mycom Compressor Standard
  - ★ Water-Cooled Condenser
- \*Requires connection to Internet (ethernet connection)*

### P34A Tube-Ice Available in Three Ice Sizes:



Not to Scale

### P34A Options:

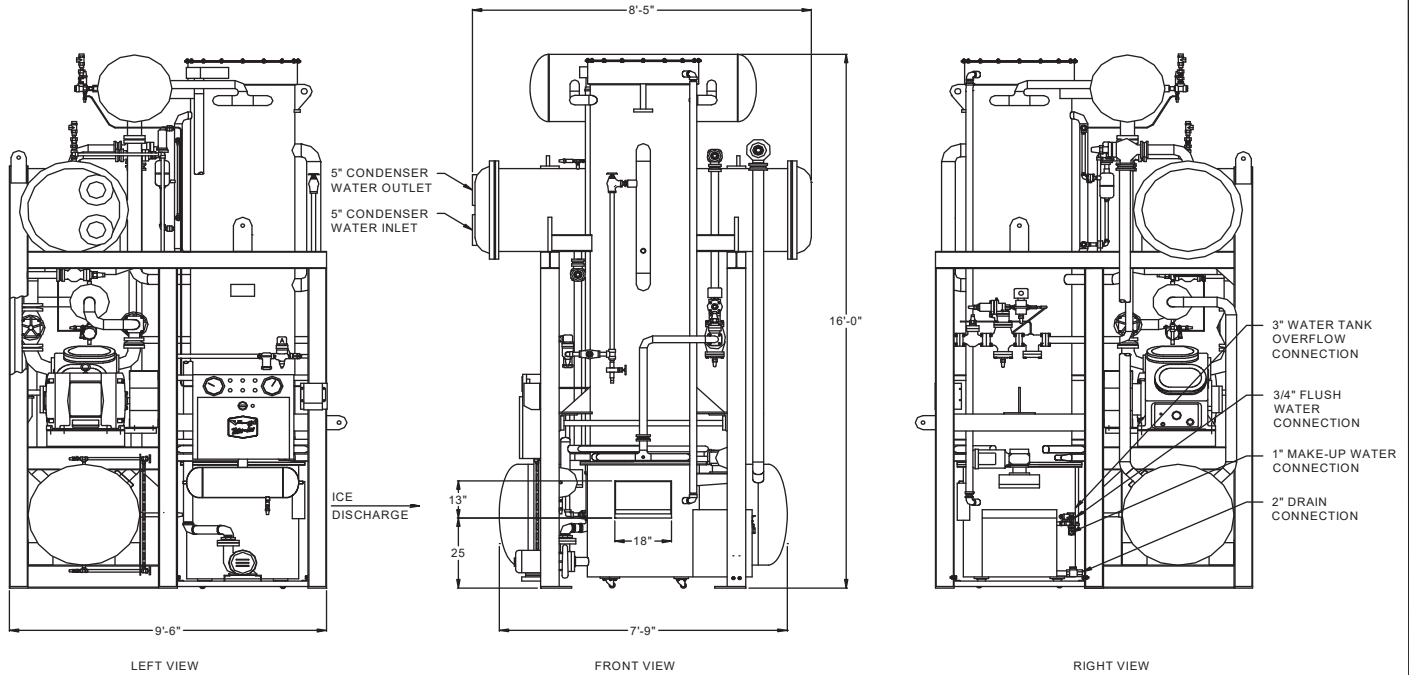
- ★ Voltage - 230v.,3p.,60hz.
- ★ Voltage - 400v.,3p.,50hz.
- ★ Voltage - 200v.,3p.,50hz.
- ★ Voltage - 575v.,3p.,60hz.
- ★ Power monitor
- ★ Cutter for 1-1/2" long ice
- ★ Cutter for crushed ice
- ★ Vilter compressor
- ★ Stainless steel condenser tubes
- ★ "CE" Approval (400v, 50hz only)
- ★ Canadian Registration Number (CRN)
- ★ Australian Wiring Code

### Operating Conditions

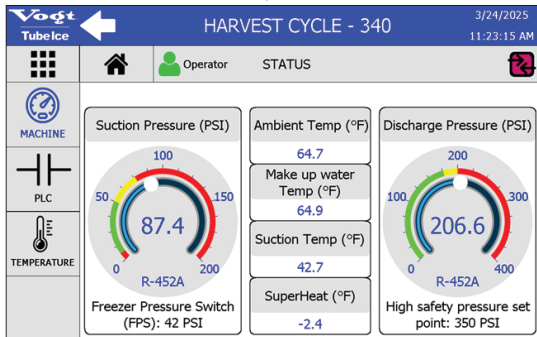
The ice machine shall not be subjected to an atmospheric temperature lower than 50 ° F. (10 ° C.) nor higher than 90 ° F. (32 ° C.) without effect on performance. Water for condensing or ice making purposes shall be non-corrosive.

The water shall be at a constant pressure no less than 30lbs. at the ice machine location. The condition of the water to make satisfactory ice shall be the responsibility of the purchaser.





### Vogt HMI Display



### New Control Features and Benefits

- Allen-Bradley PLC and sensors replace FPS, High/Low safety switches, thaw timer, DPS, etc.
- Secure remote connectivity\* with 5 user levels for extra security.
- Instant email notifications\* of machine faults sent to key users limiting down time.
- HMI displays tips for machine faults for quick and easy troubleshooting.
- Detailed history and trends enable early detection of

### P34A STANDARD CAPACITY, TONS PER 24 HOURS

Water Temperature	MODEL P34A (Ammonia Refrigerant)		
	7/8" DIA. ICE	1-1/8" DIA. ICE	1-3/8" DIA. ICE
80 °F (27 °C.)	37.7	43.6	39.3
70 °F (21 °C.)	39.7	46.0	41.5
60 °F (15 °C.)	41.9	48.5	43.9
50 °F (10 °C.)	44.4	51.5	46.7
Shipping Weight	24,500	24,100	23,700
Operating Weight	28,200	27,800	27,400

Model	Ice Machine THR (btu/hr)	Press Drop thru Condenser* (PSIG)	Condenser Water Req'd (GPM)	Water to Tower (°F)	Water from Tower (°F)
P34A	1,852,000	13	375/400**	95	85
*Pressure drop through condenser does not include water regulator.					
** P34A with carbon tubes requires 375 GPM, stainless condenser tubes requires 400GPM					

Capacity rating is average for the model. Individual machines may vary +/- 5%. Capacity based on ambient (air) temperature of 90 °F. (32 °C.). Capacity reduced 17% for 50hz. operation. Makeup water usage includes 20% blowdown.