



The HFO5 Series Tube-Ice machine continues the Vogt tradition of providing long lasting machine reliability, delivered capacity and lower energy cost solutions. This 5 ton of ice per day machine utilizes HFO refrigerants with low GWP and zero ODP. Available as a self contained water cooled unit or air-cooled remote, the HFO5 will provide you with years of dependable service without the fear of refrigerant obsolescence.

Heavy-duty industrial construction, automatic operation, energy efficiency and the best warranty in the business make the Vogt HFO5 Series the only "clear" choice for your ice making needs.

### HFO5 Standard Features:

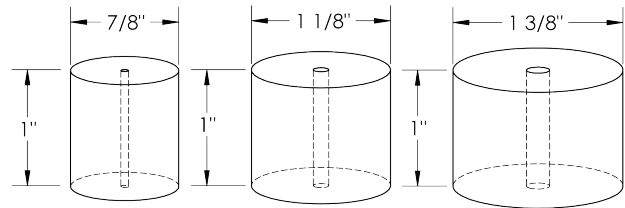
- 25 Year Evaporator Warranty
- R513A Refrigerant
- Allen-Bradley PLC with thermocouples, pressure transducers and multiple built-in safeties
- 10.1" wide HMI display with remote access capability\*
- Water-cooled or remote air-cooled operation
- Export crating (ISPM-15 Rated)
- Electronic Ice bin thermostat
- Voltage - 208/230V.,3ph.,60Hz.

*\*Requires connection to Internet (ethernet connection)*

### HFO5 Options:

- Voltage - 460V.,3ph.,60Hz.
- Voltage - 400V.,3ph.,50Hz.
- Condenser for sea water
- Stainless steel casings
- Canadian Registration Number (CRN)
- Australian Wiring Code
- Dual Ice Feature (cylinder and crushed ice)
- Cutter for 1-1/2" long ice
- Cutter for crushed ice operation

### HFO5 Tube-Ice Available in Three Ice Sizes:



Not to Scale

Energy usage based on makeup water temperature of 70 ° F. (21 ° C.), ambient (air) temperature of 90 ° F. (32 ° C.).

Capacity rating is average for the model.

Individual machines may vary +/- 5%.

Capacity based on ambient (air) temperature of 90 ° F. (32 ° C.).

Capacity reduced 17% for 50hz. operation.

Makeup water usage includes 20% blowdown.

Model	Machine Capacity						Water Usage					
	Make-Up Water Temperature						Ice Making				Water Cooled Condenser	
	50°F (10°C)		70°F (21°C)		90°F (32°C)		Gallons/100lbs	Liters/100lbs	Gallons/minute	Liters/minute	Gallons/minute	Liters/minute
HFO5 - 1"	11,670	5293	11,000	4990	9,315	4225	14.5	54.9	1	3.79	15	56.8
HFO5 - 1 1/4"	11,200	5080	10,000	4536	8,400	3810			0.94	3.56		
HFO5 - 1 1/2"	10,700	4853	9,500	4309	7,900	3583			0.93	3.52		

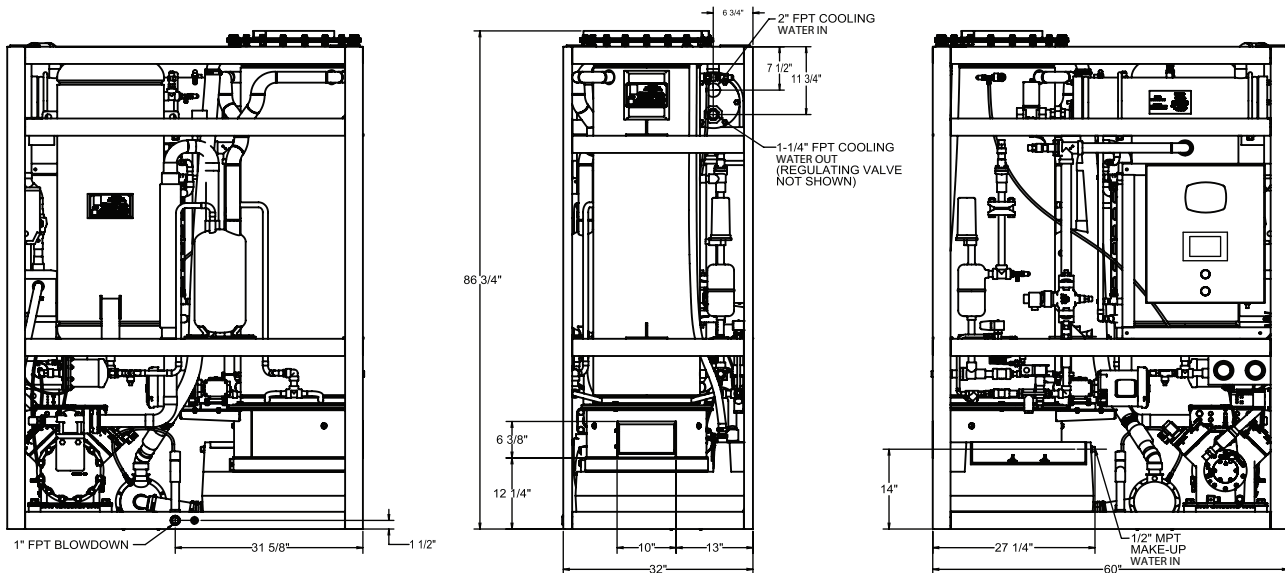
### Vogt Ice LLC

1000 W. Ormsby Avenue  
 Louisville, KY 40210  
 (800) 853-8648, (502) 635-3000  
 info@vogtice.com

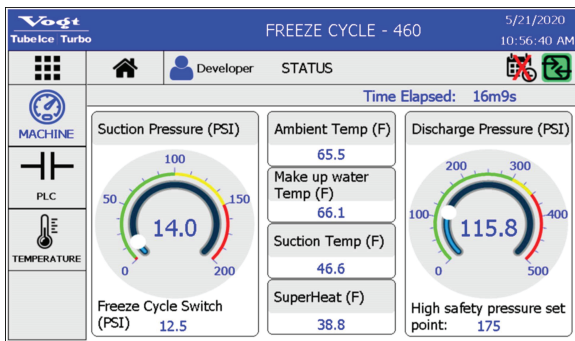


www.vogtice.com





### Vogt HMI Display



### New Control Features and Benefits

- Allen-Bradley PLC and sensors replace FPS, High/Low safety switches, thaw timer, DPS, etc.
- Secure remote connectivity\* with 5 user levels for extra security.
- Instant email notifications\* of machine faults sent to key users limiting down time.
- HMI displays tips for machine faults for quick and easy troubleshooting.
- Detailed history and trends enable early detection of

	Ice Machine Electrical Information						Motor Information			
	Air Cooled			Water Cooled			Compressor	Water Pump	Cutter Motor	Condenser Fan Motor(s)
	Full Load Amps	Minimum Ampacity	Max. Fuse Size (Amps)	Full Load Amps	Minimum Ampacity	Max. Fuse Size (Amps)				
<b>Voltage</b>							H.P.			
208/230V, 3ph, 60Hz	94.7	113.0	190	80.7	99.1	175	18			
460V, 3ph, 60Hz	47.4	56.5	95	40.4	49.5	90		1-1/2	1/2	(qty 2) @ 1 1/2
400V, 3ph, 50Hz	55.1	66.0	110	48.1	59.0	105	23			

	Machine Weights			
	Ice Machine		Air-Cooled Condenser	
	Lbs	Kg	Lbs	Kg
<b>Shipping Weight</b>	3300	1497	805	365
<b>Operating Weight</b>	2975	1349	680	308

Line Size Connections			
<b>Ice Making Water</b>		1/2" MPT	
<b>Drain Connections</b>		1" FPT	
<b>Condenser Water Lines</b>	<b>In</b>	2" FPT	
	<b>Out</b>	1 1/4" FPT	

<b>Refrigerant Line Sizes from ice machine to air-cooled condenser</b>	See air-cooled condenser installation instruction packet.
--	---

**Operating Conditions**

The ice machine shall not be subjected to atmospheric temperature lower than 50° F. (10° C.) nor higher than 90°F. (32C.) without effect on performance. Water for condensing or ice making purposes shall be non-corrosive.

The water shall be at a constant pressure no less than 30lbs. at the ice machine location. The condition of the water to make satisfactory ice shall be the responsibility of the purchaser.