



The HFO-GTi is Vogt's gourmet ice solution that is designed to produce extra large, clear cylinder ice with a minimal hole. The HFO-GTi utilizes HFO refrigerants with low GWP and zero ODP. Available as a self contained water cooled or air-cooled remote unit, the HFO-Gi will provide you with years of dependable service without the fear of refrigerant obsolescence.

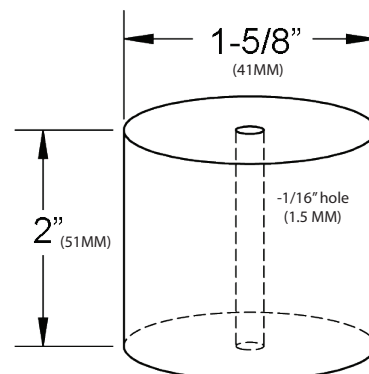
Heavy-duty industrial construction, automatic operation, energy efficiency and the best warranty in the business make the Vogt HFO-GTi the only "clear" choice for your ice making needs.

HFO-Gi Standard Features:

- ★ 25 Year Evaporator Warranty
- ★ R513A Refrigerant
- ★ Allen-Bradley PLC with thermocouples, pressure transducers and multiple built-in safeties
- ★ 10.1" wide HMI display with remote access capability*
- ★ Water-cooled or remote air-cooled operation
- ★ Export crating (ISPM-15 Rated)
- ★ Voltage - 208/230v.,3p.,60hz.

**Requires connection to Internet (ethernet connection)*

HFO-GTi Ice Size



Not to Scale

Energy usage based on makeup water temperature of 70 ° F. (21 ° C.), ambient (air) temperature of 90 ° F. (32 ° C.).

Capacity rating is average for the model.

Individual machines may vary +/- 5%.

Capacity based on ambient (air) temperature of 90 ° F. (32 ° C.).

Makeup water usage includes 20% blowdown.

HFO-GTi Options:

- ★ Voltage - 460v.,3p.,60hz.
- ★ Voltage - 400v.,3p.,50hz.
- ★ Condenser for sea water
- ★ Stainless steel casings
- ★ Canadian Registration Number (CRN)
- ★ Australian Wiring Code

Ice Machine Electrical Information

Voltage	Full Load Amps	Minimum Ampacity	Max Fuse Size (A)
208-230/3/60	113.7	136.8	230
460/3/60	54.6	65.5	110

Detailed Motor Information

Compressor (HP)	Water Pump (HP)	Cutter Motor (HP)	Condenser Fan Motors (HP)
18	1-1/2	1/2	Qty 2, 1-1/2 each

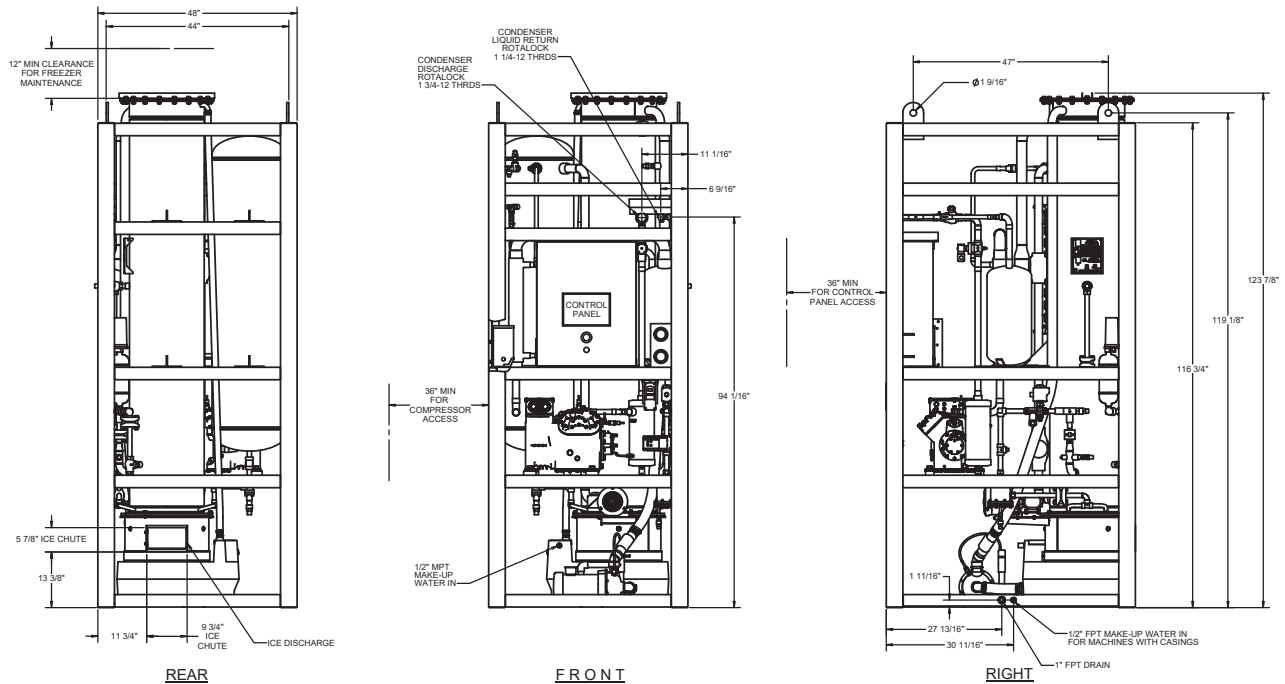
Vogt Ice LLC

1000 W. Ormsby Avenue
 Louisville, KY 40210
 (800) 853-8648, (502) 635-3000
 info@vogtice.com

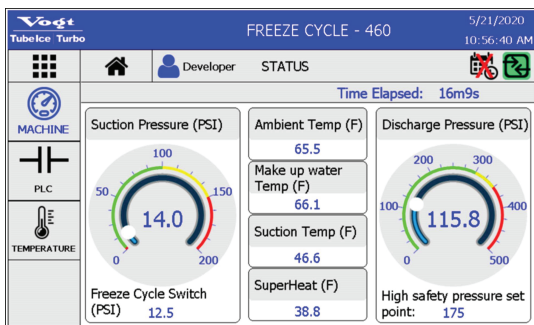


www.vogtice.com





Vogt HMI Display



New Control Features and Benefits

- Allen-Bradley PLC and sensors replace FPS, Hi/Low safety switches, thaw timer, DPS, etc.
- Secure remote connectivity* with 5 user levels for extra security.
- Instant email notifications* sent to all or only some users when a machine fault occurs for shorter down time.
- HMI displays tips for machine faults for quicker and easier troubleshooting.
- Detailed history and trends for quicker troubleshooting and early identification of growing problems.
- Can safely test each individual output for faster and easier troubleshooting.

*Requires connection to Internet (ethernet connection)

Model	Machine Capacity						Energy Usage KWH/ 100 lbs
	Make-Up Temperature						
	50°F (10°C)		60°F (16°C)		70°F (21°C)		
Lbs	Kg	Lbs	Kg	Lbs	Kg		
HFO-GTi	9,150	4150	8,950	4060	8,700	3946	3.39

Ice capacity reduced by 17% when operating on 50hz. electrical current

	Ice Machine	Air Cooled Condenser
Shipping Weight (lbs)	4,800	805
Operating Weight (lbs)	5,200	680
Refrigerant Charge (lbs)	470	-

Line Size Connections	
Ice Making Water	½" MPT
Drain Connection	1" FPT
Air Cooled Condenser Supply (at ice machine)	1-3/8" ODS*
Air Cooled Condenser Return (at ice machine)	1-1/8" ODS*

*Line sizes from condenser to ice maker may need to be larger based on line length

Operating Conditions

The ice machine shall not be subjected to an atmospheric temperature lower than 50 ° F. (10 ° C.) nor higher than 90 ° F. (32 ° C.) without effect on performance. Water for condensing or ice making purposes shall be non-corrosive.

The water shall be at a constant pressure no less than 30lbs. at the ice machine location. The condition of the water to make satisfactory ice shall be the responsibility of the purchaser.