



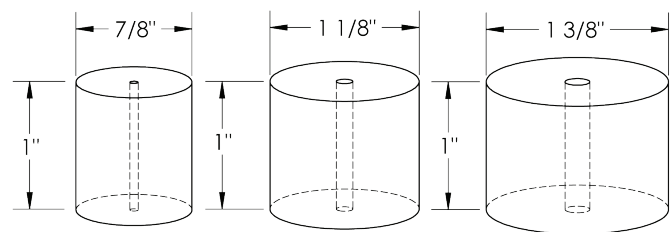
The P34H Series with a capacity of 50 tons of ice per day provides an alternative to ammonia for producing large quantities of ice without the need of a central refrigeration plant. Available as a self contained water cooled machine for operation with R452A refrigerant, the P34H will provide you with many years of dependable service.

Heavy-duty industrial construction, automatic operation, energy efficiency and the best warranty in the business make the Vogt P34H Series the only "clear" choice for your ice making needs.

P34H Standard Features:

- ★ Self Contained Packaged Unit
 - ★ Factory Tested and Certified - R452a Refrigerant charge included
 - ★ 25 Year Evaporator Warranty
 - ★ Voltage - 460v.,3p.,60hz.
 - ★ Allen-Bradley PLC with thermocouples, pressure transducers and multiple built-in safeties
 - ★ 10.1" wide HMI display with remote access capability*
 - ★ Control Voltage - 230v.,1p.,60hz (transformer included)
 - ★ UL 508A Industrial Control Panel
 - ★ Compressor Soft Start
 - ★ R452A Refrigerant
 - ★ Mycom Compressor Standard
 - ★ Water-Cooled Condenser
- *Requires connection to Internet (ethernet connection)*

P34H Tube Ice Available in Three Ice Sizes:



Not to Scale

P34H Options:

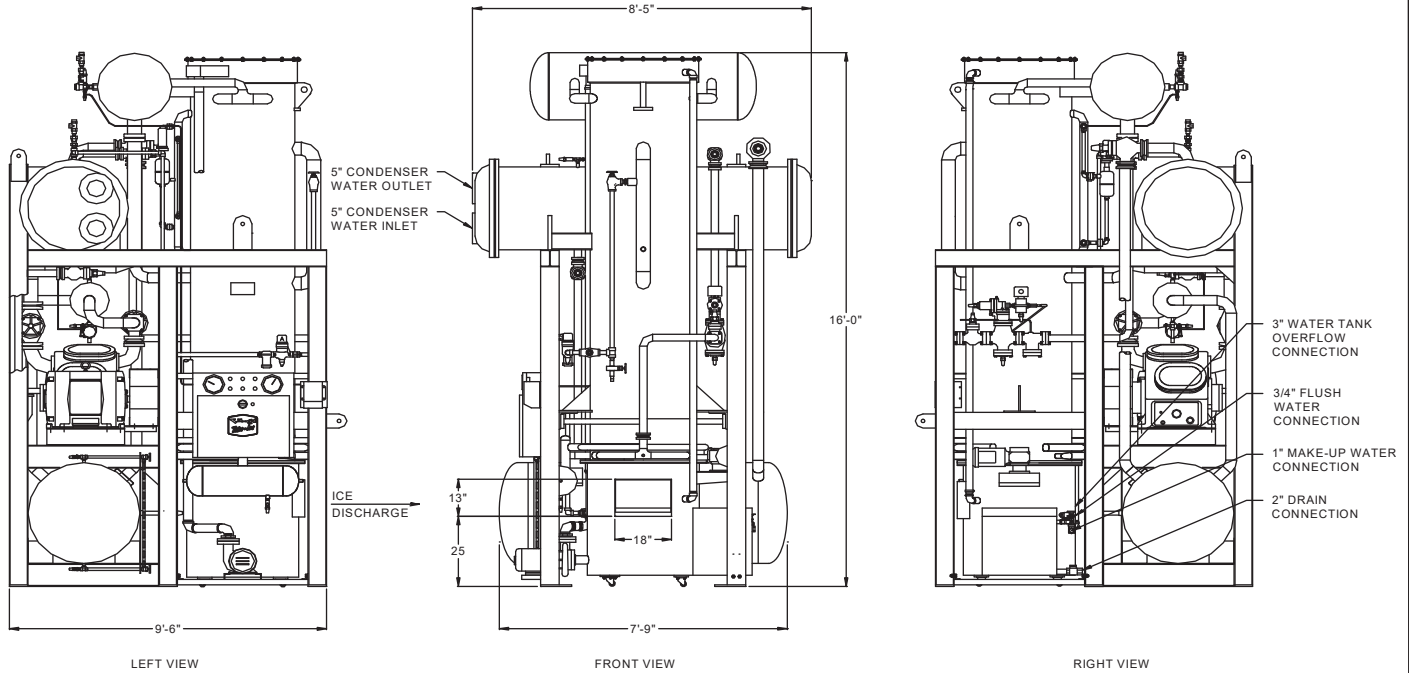
- ★ Voltage - 230v.,3p.,60hz.
- ★ Voltage - 400v.,3p.,50hz.
- ★ Voltage - 200v.,3p.,50hz.
- ★ Voltage - 575v.,3p.,60hz.
- ★ Power monitor
- ★ Cutter for 1-1/2" long ice
- ★ Cutter for crushed ice
- ★ Vilter compressor
- ★ Stainless steel condenser tubes
- ★ Canadian Registration Number (CRN)
- ★ Australia / New Zealand Wiring Code

Operating Conditions

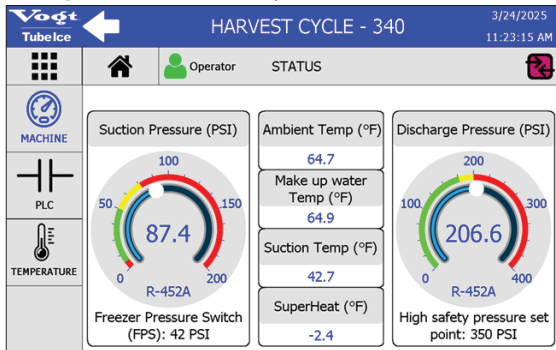
The ice machine shall not be subjected to an atmospheric temperature lower than 50 ° F. (10 ° C.) nor higher than 90 ° F. (32 ° C.) without effect on performance. Water for condensing or ice making purposes shall be non-corrosive.

The water shall be at a constant pressure no less than 30lbs. at the ice machine location. The condition of the water to make satisfactory ice shall be the responsibility of the purchaser.





Vogt HMI Display



New Control Features and Benefits

- Allen-Bradley PLC and sensors replace FPS, High/Low safety switches, thaw timer, DPS, etc.
- Secure remote connectivity* with 5 user levels for extra security.
- Instant email notifications* of machine faults sent to key users limiting down time.
- HMI displays tips for machine faults for quick and easy troubleshooting.
- Detailed history and trends enable early detection of

P34H STANDARD CAPACITY, TONS PER 24 HOURS

Water Temperature	MODEL P34F (R404a Refrigerant)		
	7/8" DIA. ICE	1-1/8" DIA. ICE	1-3/8" DIA. ICE
80 °F (27 °C.)	40.0	44.6	41.3
70 °F (21 °C.)	42.5	47.1	43.7
60 °F (15 °C.)	45.0	49.9	46.5
50 °F (10 °C.)	48.0	53.2	49.5
Shipping Weight	27,000	27,100	26,700
Operating Weight	28,200	27,800	27,400

Model	Ice Machine THR (btu/hr)	Press Drop thru Condenser* (PSIG)	Condenser Water Req'd (GPM)	Water to Tower (°F)	Water from Tower (°F)
P34H	2,309,000	3	500	95	85
*Pressure drop through condenser does not include water regulator.					
** P34A with carbon tubes requires 375 GPM, stainless condenser tubes requires 400GPM					

Capacity rating is average for the model. Individual machines may vary +/- 5%. Capacity based on ambient (air) temperature of 90 °F. (32 °C.). Capacity reduced 17% for 50hz. operation. Makeup water usage includes 20% blowdown.