

# P24H SERIES TUBE-ICE MACHINE

Self Contained P24H (R452a)



The P24H Series with a capacity of 25 tons of ice per day is the preferred ice machine for thousands of packaged ice factories worldwide that are unable to utilize ammonia. Available as a self contained water cooled machine for operation on R452a refrigerant will provide you with many years of dependable service.

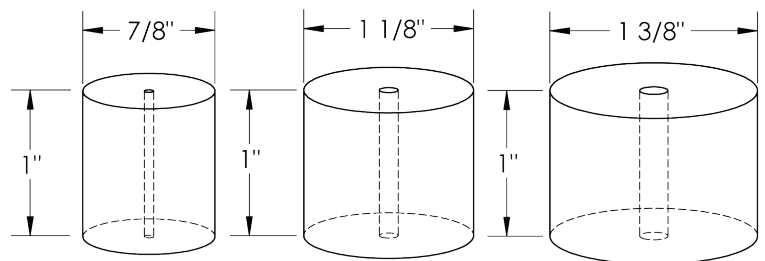
Heavy-duty industrial construction, automatic operation, energy efficiency and the best warranty in the business make the Vogt P24H Series the only "clear" choice for your ice making needs.

### P24H Standard Features:

- \* Self Contained Packaged Unit
- \* Factory Tested and Certified - R452a Refrigerant charge included
- \* 25 Year Evaporator Warranty
- \* Voltage - 460v.,3p.,60hz.
- \* Control Voltage - 230v.,1p.,60hz (transformer included)
- \* Allen-Bradley PLC with thermocouples, pressure transducers and multiple built-in safeties
- \* 10.1" wide HMI display with remote access capability\*
- \* UL 508A Industrial Control Panel
- \* Compressor Soft Start
- \* Carlyle 5H80 Compressor Standard
- \* Water-Cooled Condenser
- \* Stainless Steel Condenser Tubes

*\*Requires connection to Internet (ethernet connection)*

### P24H Tube-Ice Available in Three Ice Sizes:



Not to Scale

### P24H Options:

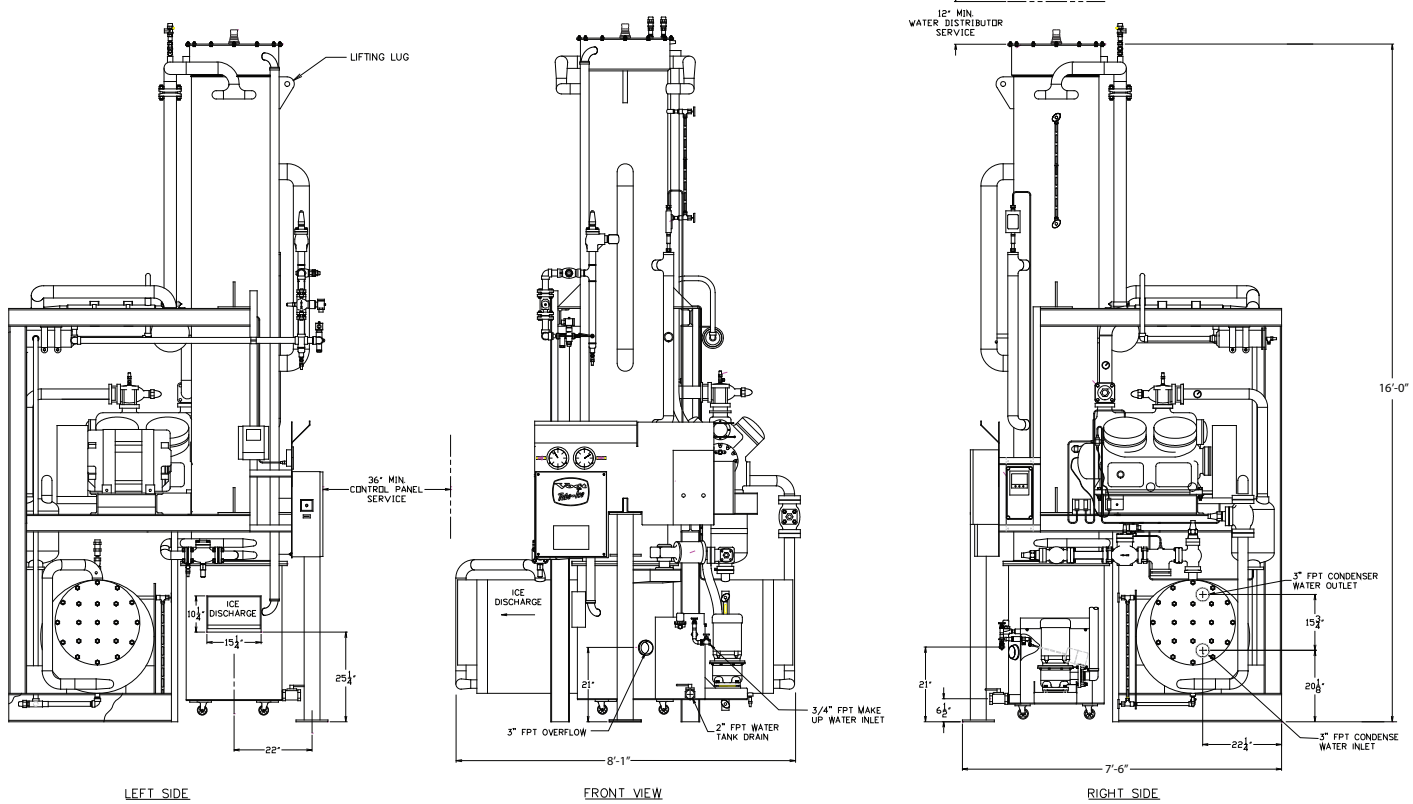
- \* Voltage - 230v.,3p.,60hz.
- \* Voltage - 400v.,3p.,50hz.
- \* Voltage - 200v.,3p.,50hz.
- \* Voltage - 575v.,3p.,60hz.
- \* Cutter for 1-1/2" long ice
- \* Cutter for crushed ice
- \* Power monitor
- \* Canadian Registration Number (CRN)
- \* Australia/New Zealand Wiring Code

### Operating Conditions

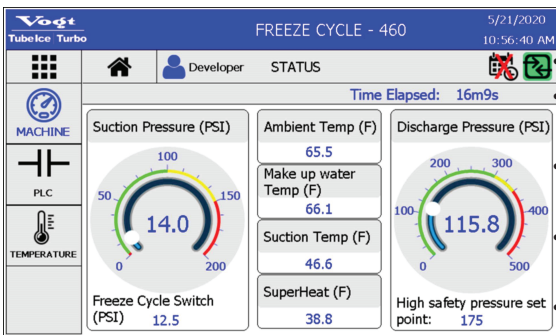
The ice machine shall not be subjected to an atmospheric temperature lower than 50 ° F. (10 ° C.) nor higher than 90 ° F. (32 ° C.) without effect on performance. Water for condensing or ice making purposes shall be non-corrosive.

The water shall be at a constant pressure no less than 30lbs. at the ice machine location. The condition of the water to make satisfactory ice shall be the responsibility of the purchaser.





### Vogt HMI Display



### New Control Features and Benefits

- Allen-Bradley PLC and sensors replace FPS, High/Low safety switches, thaw timer, DPS, etc.
- Secure remote connectivity\* with 5 user levels for extra security.
- Instant email notifications\* of machine faults sent to key users limiting down time.
- HMI displays tips for machine faults for quick and easy troubleshooting.
- Detailed history and trends enable early detection of potential issues.
- Built-in maintenance log for a better asset management.

\*Requires connection to the internet (ethernet cable)

STANDARD CAPACITY, TONS PER 24 HOURS			
Water Temperature	MODEL P24H (R452a Refrigerant)		
	7/8" DIA. ICE	1-1/8" DIA. ICE	1-3/8" DIA.ICE
80 ° F (27 ° C.)	21.7	22.6	21.9
70 ° F (21 ° C.)	22.8	23.8	23.1
60 ° F (15 ° C.)	24.0	25.1	24.3
50 ° F (10 ° C.)	25.3	26.5	25.7
Shipping Weight	13,200	13,000	12,800
Operating Weight	13,560	13,360	13,160

COOLING TOWER REQUIREMENTS				
Ice Machine THR (btu/hr)	Press Drop thru Condenser* (PSIG)	Condenser Water Req'd (GPM)	Water to Tower ( ° F)	Water from Tower ( ° F)
1,031,000	15	206	95	85

Capacity rating is average for the model.  
 Individual machines may vary +/- 5%.  
 Capacity based on ambient (air) temperature of 90 ° F. (32 ° C.).  
 Makeup water usage includes 20% blowdown.