

P24A SERIES TUBE-ICE MACHINE

Self Contained P24A (Ammonia)



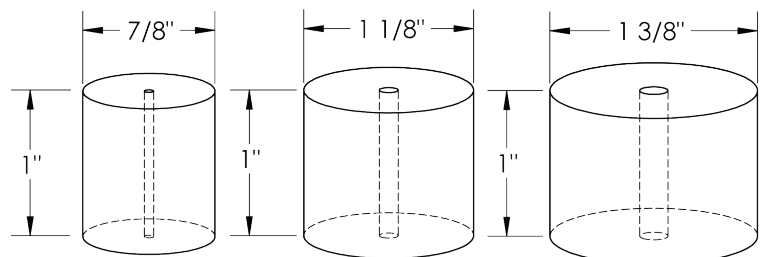
The P24A Series with a capacity of 25 tons of ice per day is the preferred ice machine for thousands of packaged ice factories worldwide. Available as a self contained water cooled machine for operation with ammonia will provide you with many years of dependable service.

Heavy-duty industrial construction, automatic operation, energy efficiency and the best warranty in the business make the Vogt P24A Series the only "clear" choice for your ice making needs.

P24A Standard Features:

- * Self Contained Packaged Unit
- * Factory Tested and Certified
- * 25 Year Evaporator Warranty
- * Voltage - 460v.,3p.,60hz.
- * Control Voltage - 230v.,1p.,60hz
- * Allen-Bradley PLC with thermocouples, pressure transducers and multiple built-in safeties
- * 10.1" wide HMI display with remote access capability*
- * UL 508A Industrial Control Panel
- * Compressor Soft Start
- * Mycom Compressor Standard
- * Water-Cooled Condenser
- * Stainless Steel Condenser Tubes

P24A Tube-Ice Available in Three Ice Sizes:



Not to Scale

P24A Options:

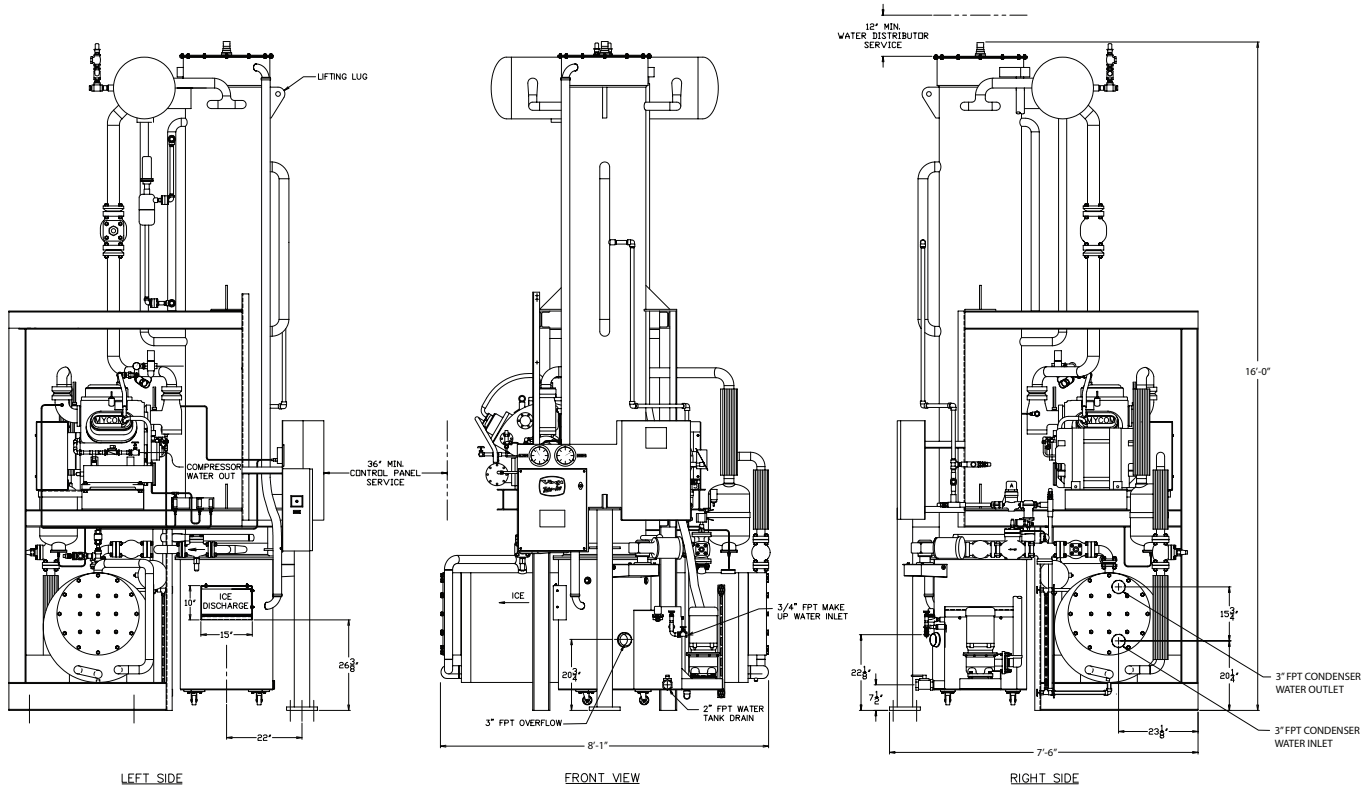
- * Voltage - 230v.,3p.,60hz.
- * Voltage - 400v.,3p.,50hz.
- * Voltage - 200v.,3p.,50hz.
- * Voltage - 575v.,3p.,60hz.
- * Cutter for 1-1/2" long ice
- * Cutter for crushed ice
- * Vilter compressor
- * Power monitor
- * CE / PED Certification
- * Canadian Registration Number (CRN)
- * Australia/New Zealand Wiring Code

Operating Conditions

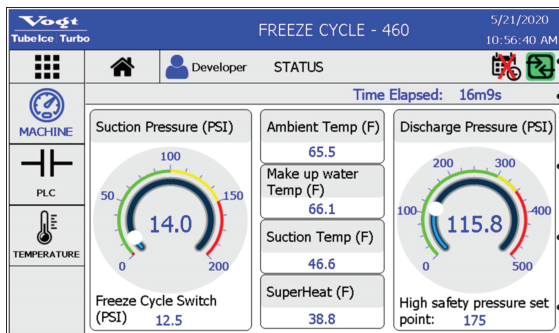
The ice machine shall not be subjected to an atmospheric temperature lower than 50 ° F. (10 ° C.) nor higher than 90 ° F. (32 ° C.) without effect on performance. Water for condensing or ice making purposes shall be non-corrosive.

The water shall be at a constant pressure no less than 30lbs. at the ice machine location. The condition of the water to make satisfactory ice shall be the responsibility of the purchaser.





Vogt HMI Display



New Control Features and Benefits

- Allen-Bradley PLC and sensors replace FPS, High/Low safety switches, thaw timer, DPS, etc.
- Secure remote connectivity* with 5 user levels for extra security.
- Instant email notifications* of machine faults sent to key users limiting down time.
- HMI displays tips for machine faults for quick and easy troubleshooting.
- Detailed history and trends enable early detection of potential issues.
- Built-in maintenance log for a better asset management.

*Requires connection to the internet (ethernet cable)

STANDARD CAPACITY, TONS PER 24 HOURS			
Water Temperature	MODEL P24A (Ammonia Refrigerant)		
	7/8" DIA. ICE	1-1/8" DIA. ICE	1-3/8" DIA. ICE
80 ° F (27 ° C.)	22.1	21.5	20.0
70 ° F (21 ° C.)	23.3	22.6	21.0
60 ° F (15 ° C.)	24.6	23.9	22.2
50 ° F (10 ° C.)	26.1	25.3	23.4
Shipping Weight	12,200	12,000	11,800
Operating Weight	13,760	13,560	13,360

COOLING TOWER REQUIREMENTS				
Ice Machine THR (btu/hr)	Press Drop thru Condenser* (PSIG)	Condenser Water Req'd (GPM)	Water to Tower (° F)	Water from Tower (° F)
981,000	14	195	95	85

Capacity rating is average for the model.

Individual machines may vary +/- 5%.

Capacity based on ambient (air) temperature of 90 ° F. (32 ° C.).

Makeup water usage includes 20% blowdown.