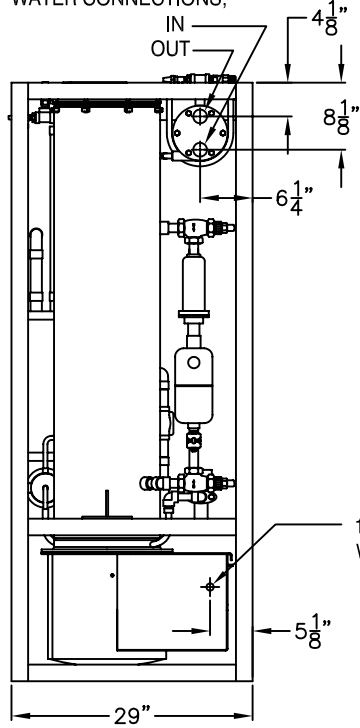


REVISION RECORD				
NO	DATE	FROM	TO	BY

1 1/4" FPT CONDENSER WATER CONNECTIONS;  
IN  
OUT



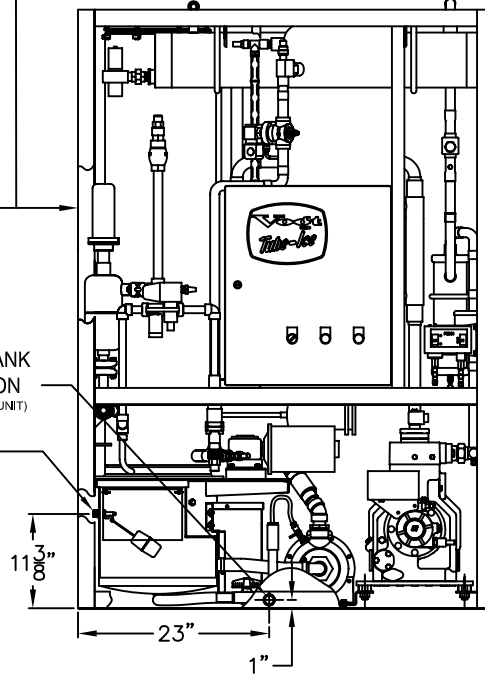
LEFT

40" MINIMUM FOR WATER TANK ACCES

12" MINIMUM CLEARANCE FOR INSTALLATION AND ACCESS

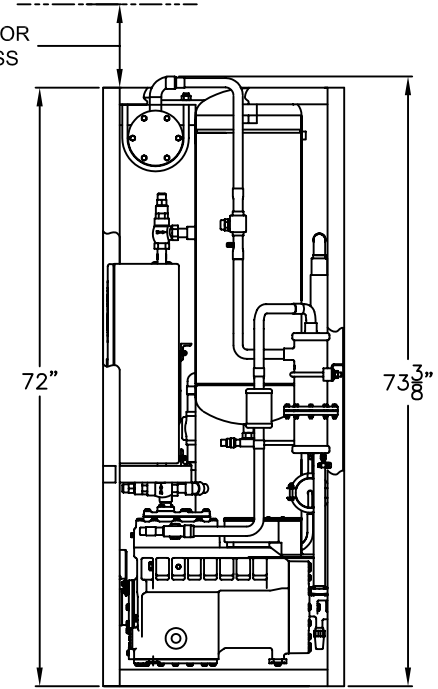
3/4" FPT WATER TANK DRAIN CONNECTION  
(LOCATED ON THE BACK OF UNIT)

1/2" MPT MAKE-UP WATER CONNECTION



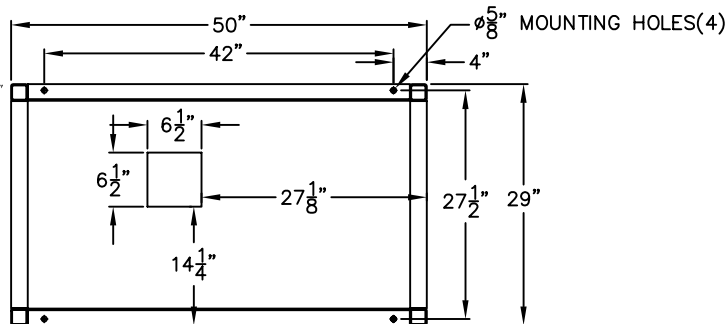
FRONT

40" MINIMUM FOR COMPRESSOR ACCES




RIGHT

MINIMUM BIN OPENING - 6 1/2" x 6 1/2"  
MAXIMUM BIN OPENING - 7" x 7"  
CHUTE SIZE - 5 5/8" X 5 5/8"



ICE CHUTE LOCATION/MACHINE FOOTPRINT

This drawing contains TUBE ICE, LLC confidential and proprietary information and cannot be used, disclosed or distributed in whole or in part, except with the express written permission of TUBE ICE, LLC.  
Except as expressly stated in any written contract, ALL WARRANTIES RELATING TO THIS DRAWING, INCLUDING THE WARRANTIES OF MERCHANTABILITY AND FITNESS, ARE DISCLAIMED.  
© 2004 TUBE ICE, LLC all rights reserved as an unpublished work.

DWN. BY <u>Mirek Radzaj</u>	 1000 W. ORMSBY AVE., LOUISVILLE, KY. 40210
CKD. BY _____	
RLSD. BY _____	SPACE DIAGRAM AND CONNECTIONS FOR WATER COOLED 03TA ICE MACHINE
DATE <u>6/3/05</u>	PART NO. _____
SCALE <u>N/A</u>	DRG. NO. 81733
	SHEET 1 OF 1