

# P34HL SERIES TUBE-ICE MACHINE

## 50 Ton per Day R513a Low-Side



The P34HL Series with a capacity of 50 tons of ice per day is a low-side Tube-Ice machine designed to operate in perfect harmony with the Vogt HFOPAK50 high side or a central refrigeration system. The P34HL will provide you with many years of dependable service.

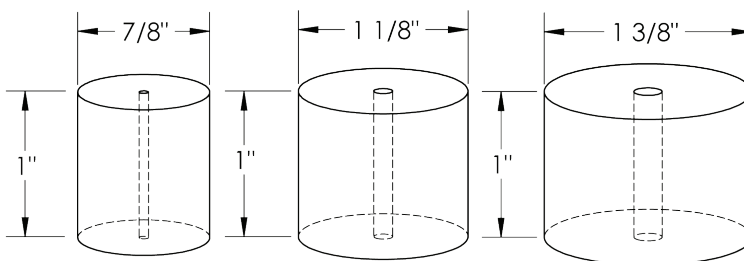
Heavy-duty industrial construction, automatic operation, energy efficiency and the best warranty in the business make Vogt Tube-Ice machines the only "clear" choice for your ice making needs.

### P34HL Standard Features:

- ★ 25 Year Evaporator Warranty
- ★ R513a Refrigerant Operation
- ★ Allen-Bradley PLC with thermocouples, pressure transducers and multiple built-in safeties
- ★ 10.1" wide HMI display with remote access capability\*
- ★ Up to 50 tons of ice per day
- ★ Valve stations
- ★ Voltage - 230v., 3p., 60hz.
- ★ Control Voltage - 230v., 1p., 60hz
- ★ UL 508A Industrial Control Panel
- ★ Manufactured in accordance with A.S.M.E. code
- ★ Standard ice length 1"

*\*Requires connection to Internet (ethernet connection)*

### P34HL Tube-Ice Available in three Ice Sizes:



### P34HL Options:

- ★ Voltage - 460 v., 3p., 60hz.
- ★ Voltage - 400v., 3p., 50hz.
- ★ Voltage - 575v., 3p., 60hz.
- ★ Cutter for 1-1/2" long ice
- ★ All stainless steel
- ★ "CE" Approval (400v, 50hz only)
- ★ Canadian Registration Number (CRN)

### Operating Conditions

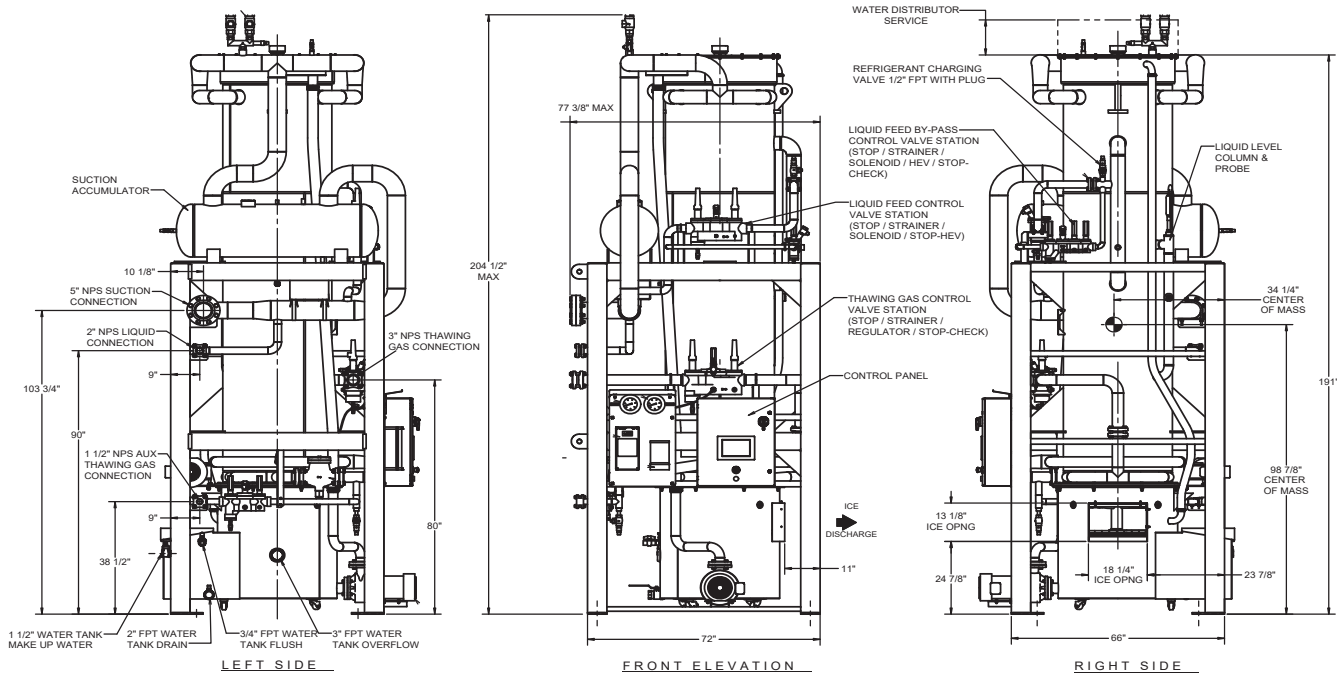
The ice machine shall not be subjected to an atmospheric temperature lower than 50 ° F. (10 ° C.) nor higher than 90 ° F. (32 ° C.) without effect on performance. Water for condensing or ice making purposes shall be non-corrosive.

The water shall be at a constant pressure no less than 30lbs. at the ice machine location. The condition of the water to make satisfactory ice shall be the responsibility of the purchaser.

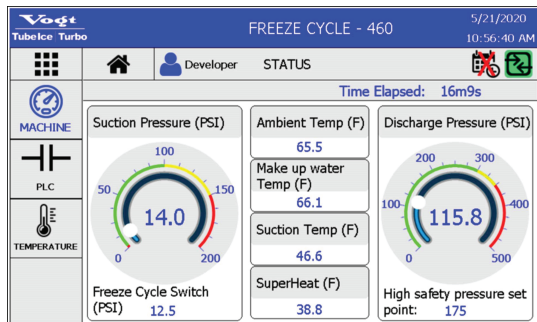


# P34HL SERIES TUBE-ICE MACHINE

## 50 Ton per Day R513a Low-Side



### Vogt HMI Display



### New Control Features and Benefits

Allen-Bradley PLC and sensors replace FPS, High/Low safety switches, thaw timer, DPS, etc.

Secure remote connectivity\* with 5 user levels for extra security.

Instant email notifications\* of machine faults sent to key users limiting down time.

HMI displays tips for machine faults for quick and easy troubleshooting.

Detailed history and trends enable early detection of potential issues.

Built-in maintenance log for a better asset management.

*\*Requires connection to Internet (ethernet connection)*

Water Temperature	P34HL STANDARD CAPACITY TONS OF ICE PER 24 HOURS @ 10 <sup>0</sup> F (-12 <sup>0</sup> C) SUCTION					
	7/8" Diameter Ice		1-1/8" Diameter Ice		1-3/8" Diameter Ice	
80 <sup>0</sup> F (27 <sup>0</sup> C.)	44.5		42.2		36.6	
70 <sup>0</sup> F (21 <sup>0</sup> C.)	46.6		44.3		38.5	
60 <sup>0</sup> F (15 <sup>0</sup> C.)	48.8		46.6		40.6	
50 <sup>0</sup> F (10 <sup>0</sup> C.)	51.2		49.0		42.9	
Shipping Weight	11,350		10,800		10,600	
Operating Weight	13,020		12,470		12,270	

CAPACITY TABLE, TONS OF ICE PER 24 HOURS (AT SUCTION TEMPERATURE<sup>0</sup> F)

Water Temperature	0 <sup>0</sup> F (-18 <sup>0</sup> C)			5 <sup>0</sup> F (-15 <sup>0</sup> C)			15 <sup>0</sup> F (-9 <sup>0</sup> C)			20 <sup>0</sup> F (-7 <sup>0</sup> C)		
	7/8"	1-1/8"	1-3/8"	7/8"	1-1/8"	1-3/8"	7/8"	1-1/8"	1-3/8"	7/8"	1-1/8"	1-3/8"
80 <sup>0</sup> F (27 <sup>0</sup> C.)	58.1	56.0	49.4	51.6	49.4	43.2	36.7	34.4	29.7	28.1	25.9	22.2
70 <sup>0</sup> F (21 <sup>0</sup> C.)	60.4	58.6	51.7	53.8	51.7	45.3	38.5	36.2	31.2	29.4	27.4	23.4
60 <sup>0</sup> F (15 <sup>0</sup> C.)	63.0	61.3	54.3	56.3	54.2	47.7	40.4	38.1	33.0	31.0	28.9	24.7
50 <sup>0</sup> F (10 <sup>0</sup> C.)	65.8	64.3	57.1	58.9	57.0	50.3	42.6	40.3	34.9	32.7	30.6	26.3