

# P34AXL SERIES TUBE-ICE MACHINE

80 Ton per Day Ammonia Low-Side



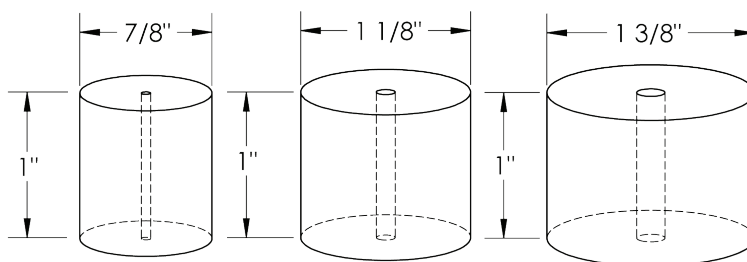
The P34AXL Series with a capacity of 80 tons of ice per day is an ammonia low-side Tube-Ice machine designed to operate with a dedicated ammonia high-side or on a central refrigeration system. The P34AXL will provide you with many years of dependable service.

Heavy-duty industrial construction, automatic operation, energy efficiency and the best warranty in the business make Vogt Tube-Ice machines the only "clear" choice for your ice making needs.

## P34AXL Standard Features:

- ★ 25 Year Evaporator Warranty
- ★ Up to 80 tons of ice per day
- ★ Voltage - 230v., 3p., 60hz.
- ★ Control Voltage - 230v., 1p., 60hz
- ★ UL 508A Industrial Control Panel
- ★ Ammonia flooded operation
- ★ Manufactured in accordance with A.S.M.E. code
- ★ Standard ice length 1"

## P34AXL Tube-Ice Available in Three Ice Sizes:



Not to Scale

## P34AXL Options:

- ★ Voltage -460 v., 3p., 60hz.
- ★ Voltage - 400v., 3p., 50hz.
- ★ Voltage - 575v., 3p., 60hz.
- ★ 120v Controls
- ★ PLC Control panel (programmable logic controller)
- ★ Power monitor
- ★ Cutter for 1-1/2" long ice
- ★ Cutter for crushed ice
- ★ R.S. control valves
- ★ Liquid overfeed
- ★ All stainless steel
- ★ "CE" Approval (400v, 50hz only)
- ★ Canadian Registration Number (CRN)

## Operating Conditions

The ice machine shall not be subjected to an atmospheric temperature lower than 50 ° F. (10 ° C.) nor higher than 90 ° F. (32 ° C.) without effect on performance. Water for condensing or ice making purposes shall be non-corrosive.

The water shall be at a constant pressure no less than 30lbs. at the ice machine location. The condition of the water to make satisfactory ice shall be the responsibility of the purchaser.

### Vogt Ice LLC

1000 W. Ormsby Avenue  
Louisville, KY 40210  
(800) 853-8648, (502) 635-3000  
info@vogtice.com

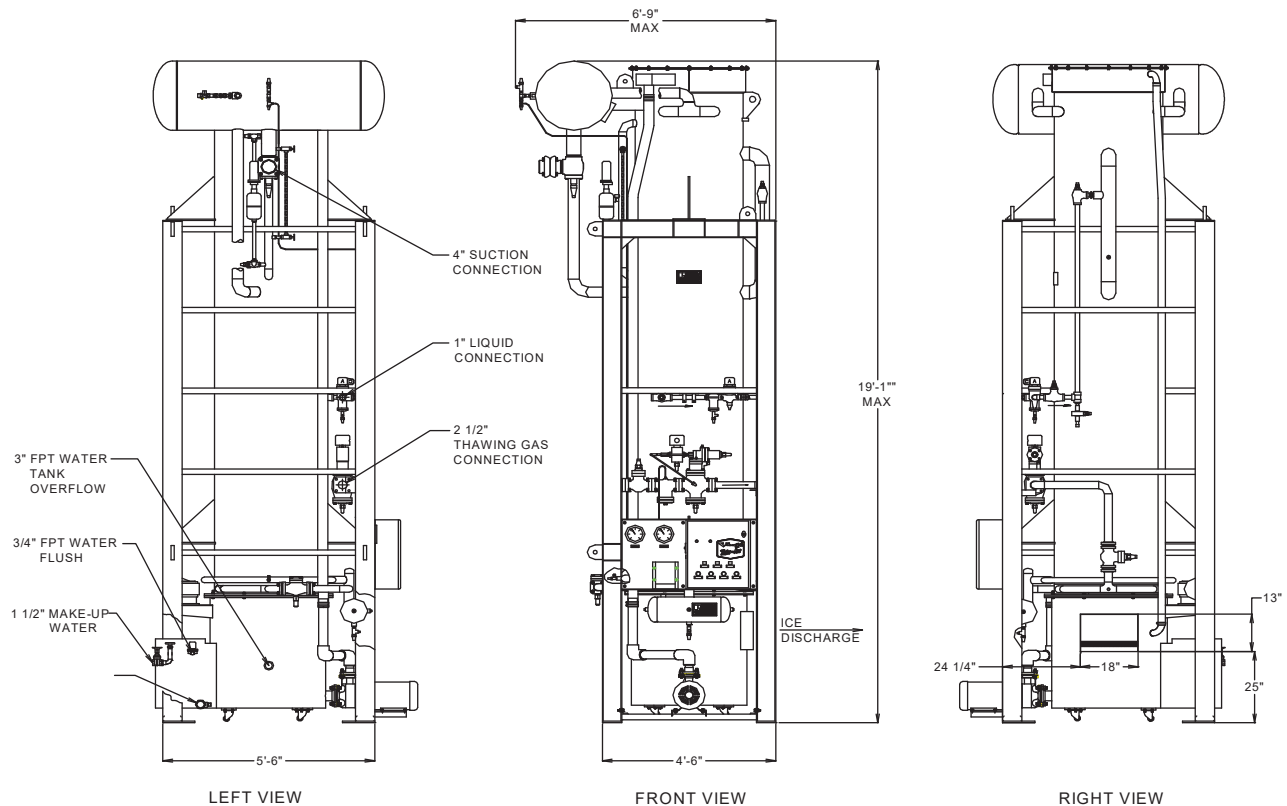


[www.vogtice.com](http://www.vogtice.com)



# P34AXL SERIES TUBE-ICE MACHINE

## 80 Ton per Day Ammonia Low-Side



Water Temperature	P34AXL STANDARD CAPACITY TONS OF ICE PER 24 HOURS @ 10° F (-12° C) SUCTION (FLOODED)											
	7/8" Diameter Ice				1-1/8" Diameter Ice				1-3/8" Diameter Ice			
80° F (27° C.)	74.7				71.7				55.1			
70° F (21° C.)	77.3				74.7				57.6			
60° F (15° C.)	80.1				78.0				60.3			
50° F (10° C.)	83.2				81.6				63.2			
Shipping Weight	12,500				12,300				12,000			
Operating Weight	16,400				16,200				15,900			

Water Temperature	CAPACITY TABLE, TONS OF ICE PER 24 HOURS (AT SUCTION TEMPERATURE ° F) (FLOODED)											
	0° F (-18° C)			5° F (-15° C)			15° F (-9° C)			20° F (-7° C)		
	7/8"	1-1/8"	1-3/8"	7/8"	1-1/8"	1-3/8"	7/8"	1-1/8"	1-3/8"	7/8"	1-1/8"	1-3/8"
80° F (27° C.)	93.5	93.3	72.9	84.7	83.0	64.4	63.1	59.2	45.0	49.5	45.2	34.0
70° F (21° C.)	96.3	96.8	75.9	87.5	86.4	67.1	65.5	61.8	47.1	51.5	47.3	35.7
60° F (15° C.)	99.3	100.6	79.2	90.4	89.9	70.2	68.1	64.7	49.4	53.8	49.7	37.5
50° F (10° C.)	102.6	104.8	82.8	93.6	93.8	73.5	70.9	67.8	52.0	56.2	52.2	39.6

Capacity based on 50 gallon blowdown per cycle with 4 minute harvest.

Water Temperature	P34AXL STANDARD CAPACITY TONS OF ICE PER 24 HOURS @ 5° F (-15° C) SUCTION (LOF)											
	7/8" Diameter Ice				1-1/8" Diameter Ice				1-3/8" Diameter Ice			
80° F (27° C.)	92.4				90.4				69.3			
70° F (21° C.)	94.8				93.4				71.8			
60° F (15° C.)	97.3				96.7				74.5			
50° F (10° C.)	100.0				100.2				77.4			

Capacity based on 5 gallon blowdown per cycle with RO water, 4 minute harvest.

### Capacities based on the following:

- Flooded ammonia liquid feed
- Blowdown of 50 gallons per cycle
- Ammonia discharge pressure of 185psig
- Harvest cycle of 4 minutes