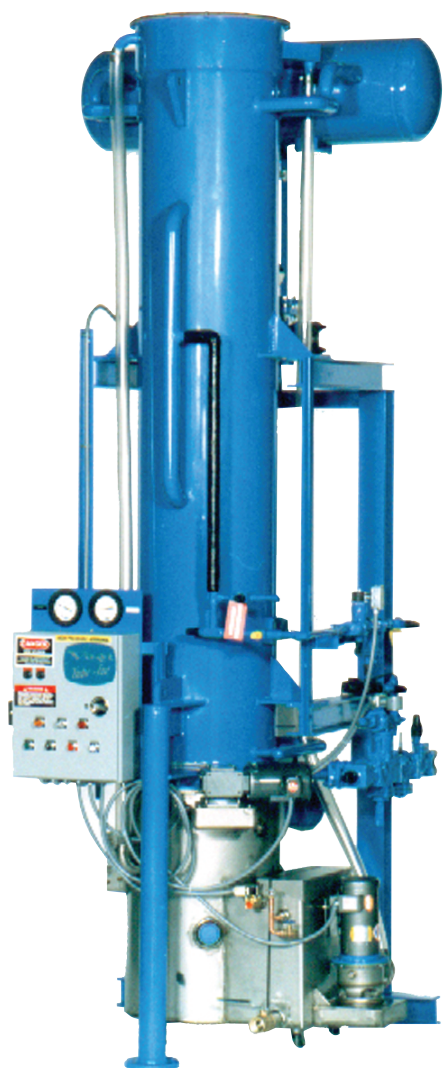


P24AL SERIES TUBE-ICE MACHINE

25 Ton per Day Ammonia Low-Side



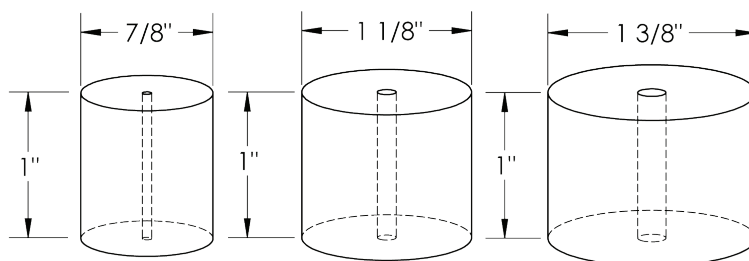
The P24AL Series with a capacity of 25 tons of ice per day is an ammonia low-side Tube-Ice machine designed to operate with a dedicated ammonia high-side or on a central refrigeration system. The P24AL will provide you with many years of dependable service.

Heavy-duty industrial construction, automatic operation, energy efficiency and the best warranty in the business make Vogt Tube-Ice machines the only "clear" choice for your ice making needs.

P24AL Standard Features:

- ★ 25 Year Evaporator Warranty
- ★ Up to 25 tons of ice per day
- ★ Voltage - 230v., 3p., 60hz.
- ★ Control Voltage - 230v., 1p., 60hz
- ★ UL 508A Industrial Control Panel
- ★ Ammonia flooded operation
- ★ Manufactured in accordance with A.S.M.E. code
- ★ Standard ice length 1"

P24AL Tube-Ice Available in Three Ice Sizes:



Not to Scale

P24AL Options:

- ★ Voltage - 460 v., 3p., 60hz.
- ★ Voltage - 400v., 3p., 50hz.
- ★ Voltage - 575v., 3p., 60hz.
- ★ 120v Controls
- ★ PLC Control panel (programmable logic controller)
- ★ Power monitor
- ★ Cutter for 1-1/2" long ice
- ★ Cutter for crushed ice
- ★ Cutterless option
- ★ R.S. control valves
- ★ Liquid overfeed
- ★ All stainless steel
- ★ "CE" Approval (400v, 50hz only)
- ★ Canadian Registration Number (CRN)

Operating Conditions

The ice machine shall not be subjected to an atmospheric temperature lower than 50 ° F. (10 ° C.) nor higher than 90 ° F. (32 ° C.) without effect on performance. Water for condensing or ice making purposes shall be non-corrosive.

The water shall be at a constant pressure no less than 30lbs. at the ice machine location. The condition of the water to make satisfactory ice shall be the responsibility of the purchaser.

Vogt Ice LLC
1000 W. Ormsby Avenue
Louisville, KY 40210
(800) 853-8648, (502) 635-3000
info@vogtice.com

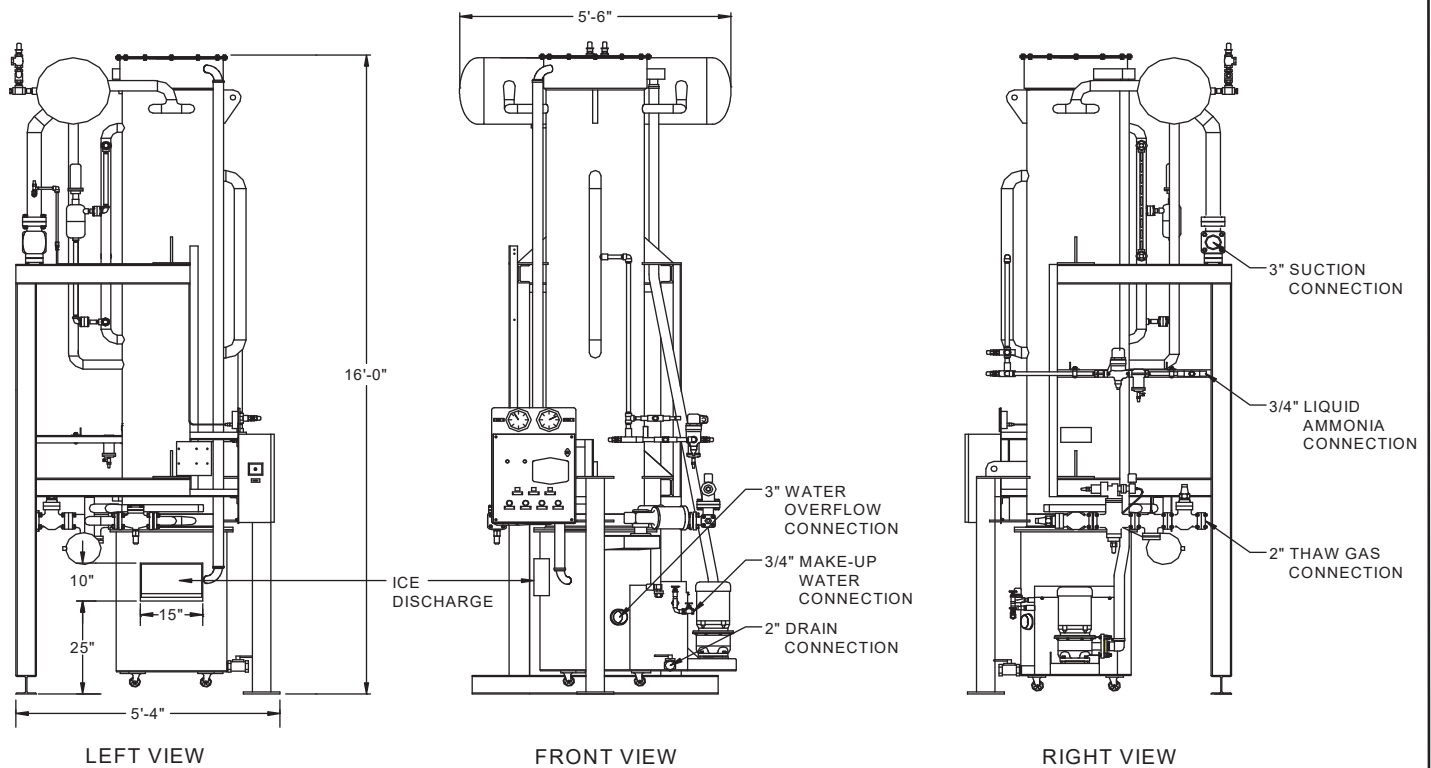


www.vogtice.com



P24AL SERIES TUBE-ICE MACHINE

25 Ton per Day Ammonia Low-Side



Water Temperature	P24AL STANDARD CAPACITY TONS OF ICE PER 24 HOURS @ 10° F SUCTION		
	7/8" Diameter Ice	1-1/8" Diameter Ice	1-3/8" Diameter Ice
80 °F	29.1	28.1	21.3
70 °F	30.1	29.3	22.2
60 °F	31.2	30.6	23.2
50 °F	32.3	31.9	24.3
Shipping Weight	6,400	6,200	6,000
Operating Weight	7,260	7,060	6,860

CAPACITY TABLE, TONS OF ICE PER 24 HOURS (AT SUCTION TEMPERATURE ° F)												
Water Temperature	0 °F			5 °F			15 °F			20 °F		
	7/8"	1-1/8"	1-3/8"	7/8"	1-1/8"	1-3/8"	7/8"	1-1/8"	1-3/8"	7/8"	1-1/8"	1-3/8"
80 °F	36.9	37.0	28.4	33.2	32.7	25.0	24.4	23.1	17.3	19.0	17.5	13.0
70 °F	38.0	38.3	29.6	34.3	34.0	26.0	25.3	24.1	18.1	19.7	18.3	13.6
60 °F	39.2	39.8	30.8	35.4	35.4	27.2	26.3	25.2	19.0	20.6	19.2	14.3
50 °F	40.4	41.5	32.2	36.7	36.9	28.4	27.3	26.4	19.9	21.4	20.2	15.0

Capacities based on the following:

- Flooded ammonia liquid feed
- Blowdown of 15 gallons per cycle
- Ammonia discharge pressure of 185psig
- Harvest cycle of 3.5 minutes