



The HFO10 Series with a capacity of 10 tons of ice per day is Vogt's new champion of the mid-size Tube-Ice machine line utilizing HFO refrigerants with low GWP and zero ODP. Available as a self contained water cooled or remote air-cooled unit, the HFO10 will provide you with years of dependable service without the fear of refrigerant obsolescence.

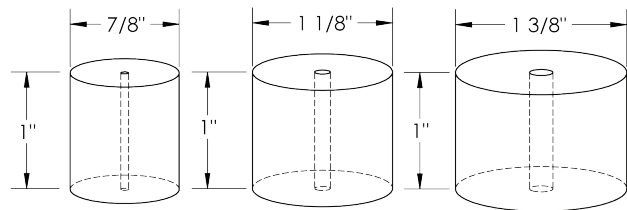
Heavy-duty industrial construction, automatic operation, energy efficiency and the best warranty in the business make the Vogt HFO10 Series the only "clear" choice for your ice making needs.

### HFO10 Standard Features:

- 25 Year Evaporator Warranty
- Voltage - 460V.,3ph.,60Hz.
- R513 Refrigerant
- Highly efficient, reliable Bitzer screw compressor
- Allen-Bradley PLC with thermocouples, pressure transducers and multiple built-in safeties
- 10.1" wide HMI display with remote access capability\*
- Water-cooled or remote air-cooled operation
- Export crating (ISPM-15 Rated)
- Power monitor on 50hz units

*\*Requires connection to Internet (ethernet connection)*

### HFO10 Tube-Ice Available in Three Ice Sizes:



Not to Scale

Energy usage based on makeup water temperature of 70 ° F. (21 ° C.), ambient (air) temperature of 90 ° F. (32 ° C.).

Capacity rating is average for the model. Individual machines may vary +/- 5%.

Capacity based on ambient (air) temperature of 90 ° F. (32 ° C.).

Capacities based on testing of 1-1/4" model and subject to change

Makeup water usage includes 20% blowdown.

### HFO10 Options:

- Voltage - 208/230v.,3p.,60hz.
- Voltage - 400v.,3p.,50hz.
- Condenser for sea water
- Cutter for 1-1/2" long ice
- Cutter for crushed ice (not available on 1" tube)
- Stainless steel casings
- "CE" Approval (400v, 50hz only)
- Canadian Registration Number (CRN)
- Australian Wiring Code

|                | Machine Capacity    |      |             |      |              |      | Energy Usage<br>KWH/<br>100 lbs | Water Usage    |                   |      |      |           |     |
|----------------|---------------------|------|-------------|------|--------------|------|---------------------------------|----------------|-------------------|------|------|-----------|-----|
|                | Make-Up Temperature |      |             |      |              |      |                                 | Ice Making     |                   |      |      | Condenser |     |
|                | 50°F (10°C)         |      | 70°F (21°C) |      | 90°F (32 °C) |      |                                 | Gal/<br>100lbs | Liters/<br>100lbs | GPM  | LPM  | GPM       | LPM |
| Model          | Lbs                 | Kg   | Lbs         | Kg   | Lbs          | Kg   |                                 | 14.5           | 54.9              |      |      | 90        | 340 |
| HFO10 - 1"     | 21,545              | 9773 | 18,895      | 8571 | 16,500       | 7484 | 2.36                            |                |                   | 2.35 | 8.89 |           |     |
| HFO10 - 1 1/4" | 19,775              | 8970 | 18,000      | 8165 | 15,690       | 7117 | 2.98                            |                |                   | 2.12 | 8.02 |           |     |
| HFO10 - 1 1/2" | 18,595              | 8435 | 15,690      | 7117 | 14,415       | 6539 | 3.01                            |                |                   | 2.04 | 7.72 |           |     |

Vogt Ice LLC

1000 W. Ormsby Avenue

Louisville, KY 40210

(800) 853-8648, (502) 635-3000

info@vogtice.com

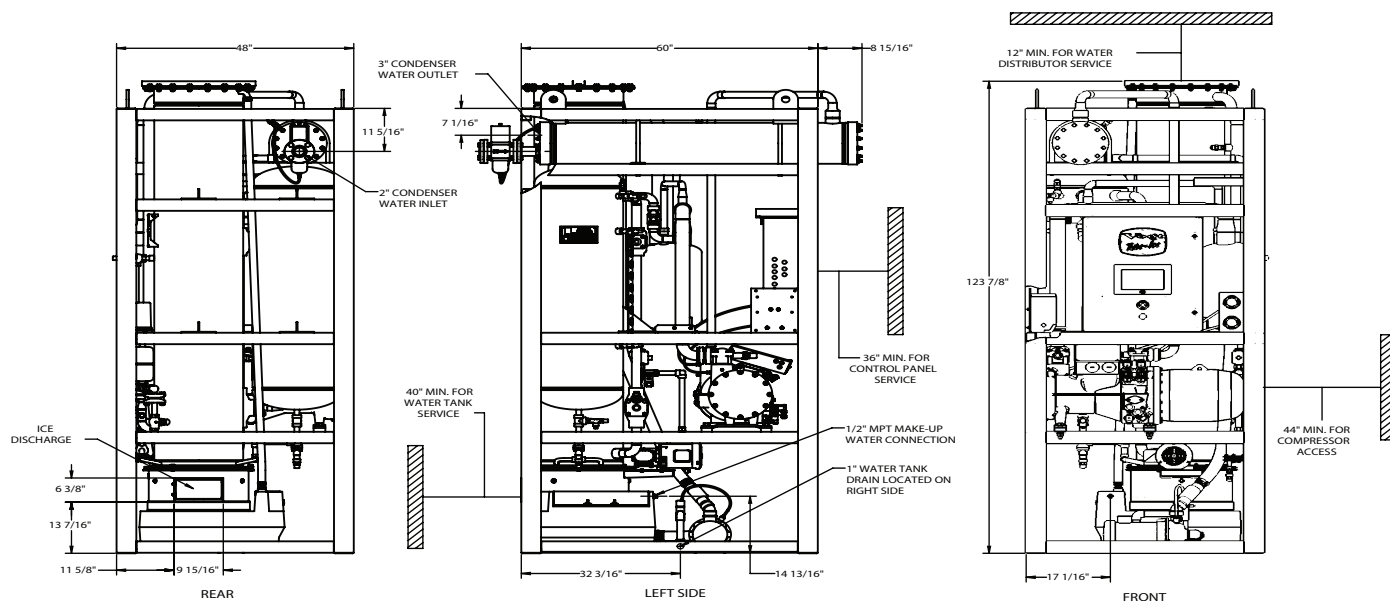


www.vogtice.com

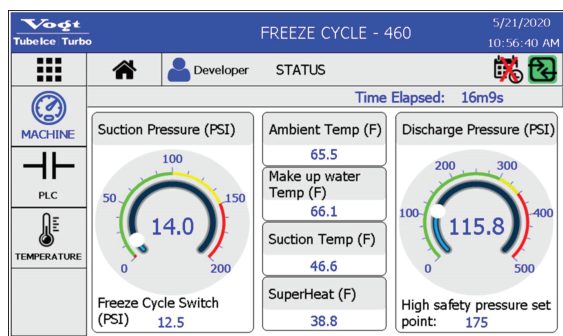


# HFO10 SERIES TUBE-ICE MACHINE

HFO10-1", HFO10-1 1/4" & HFO10-1 1/2"



## Vogt HMI Display



## New Control Features and Benefits

- Allen-Bradley PLC and sensors replace FPS, High/Low safety switches, thaw timer, DPS, etc.
- Secure remote connectivity\* with 5 user levels for extra security.
- Instant email notifications\* of machine faults sent to key users limiting down time.
- HMI displays tips for machine faults for quick and easy troubleshooting.
- Detailed history and trends enable early detection of potential issues.
- Built-in maintenance log for a better asset management.

\*Requires connection to the internet (ethernet cable)

## Ice Machine Electrical Information

|                 | Water Cooled |               |                       |
|-----------------|--------------|---------------|-----------------------|
|                 | F.L.A.       | Min. Ampacity | Max. Fuse Size (Amps) |
| <b>Voltage</b>  |              |               |                       |
| 460V, 3ph, 60hz | 44.0         | 54.0          | 95                    |
| 400V, 3ph, 50hz | 53.5         | 65.6          | 115                   |

## Motor Information

| Water Pump | Cutter Motor | Compressor |
|------------|--------------|------------|
| H.P.       |              |            |
| 1 1/2      | 1/2          | 35         |

|                         | Lbs  | Kg   |
|-------------------------|------|------|
| <b>Shipping Weight</b>  | 4800 | 2177 |
| <b>Operating Weight</b> | 4900 | 2223 |

## Line Size Connections

|                               |          |
|-------------------------------|----------|
| <b>Ice Making Water</b>       | 1/2" MPT |
| <b>Drain Connections</b>      | 1" FPT   |
| <b>Condenser Water Inlet</b>  | 2" FPT   |
| <b>Condenser Water Outlet</b> | 3" FPT   |

## Operating Conditions

The ice machine shall not be subjected to atmospheric temperature lower than 50° F. (10° C.) nor higher than 90°F. (32C.) without effect on performance. Water for condensing or ice making purposes shall be non-corrosive.

The water shall be at a constant pressure no less than 30lbs. at the ice machine location. The condition of the water to make satisfactory ice shall be the responsibility of the purchaser.