

P34A/F SERIES TUBE-ICE MACHINE

Self Contained P34A (Ammonia), P34F (R404a)



P34A

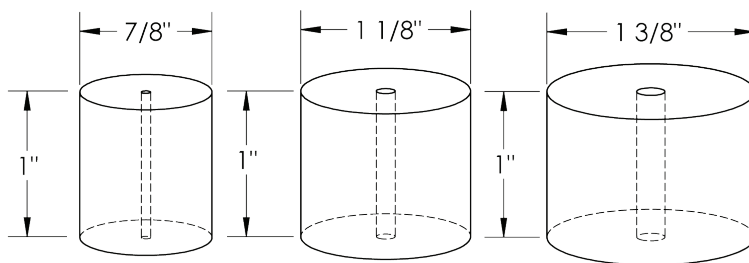
The P34A/F Series with a capacity of 50 tons of ice per day provides an alternative for producing large quantities of ice without the need of a central refrigeration plant. Available as a self contained water cooled machine for operation with ammonia or R404a refrigerant, the P34A/F will provide you with many years of dependable service.

Heavy-duty industrial construction, automatic operation, energy efficiency and the best warranty in the business make the Vogt P34A/F Series the only "clear" choice for your ice making needs.

P34A/F Standard Features:

- ★ Self Contained Packaged Unit
- ★ Factory Tested and Certified
- ★ 25 Year Evaporator Warranty
- ★ Voltage - 460v.,3p.,60hz.
- ★ Control Voltage - 230v.,1p.,60hz
- ★ UL 508A Industrial Control Panel
- ★ Compressor Soft Start
- ★ R404a or Ammonia Refrigerant
- ★ Mycom Compressor Standard
- ★ Water-Cooled Condenser
- ★ R404a refrigerant charge included in P34F (except CE units)

P34A/F Tube-Ice Available in Three Ice Sizes:



Not to Scale

P34A/F Options:

- ★ Voltage - 230v.,3p.,60hz. (P34A only)
- ★ Voltage - 400v.,3p.,50hz.
- ★ Voltage - 200v.,3p.,50hz. (P34A only)
- ★ Voltage - 575v.,3p.,60hz.
- ★ PLC Control panel (programmable logic controller)
- ★ Power monitor
- ★ Cutter for 1-1/2" long ice
- ★ Cutter for crushed ice
- ★ Vilter compressor
- ★ Stainless steel condenser tubes
- ★ "CE" Approval (400v, 50hz only)
- ★ Canadian Registration Number (CRN)

Operating Conditions

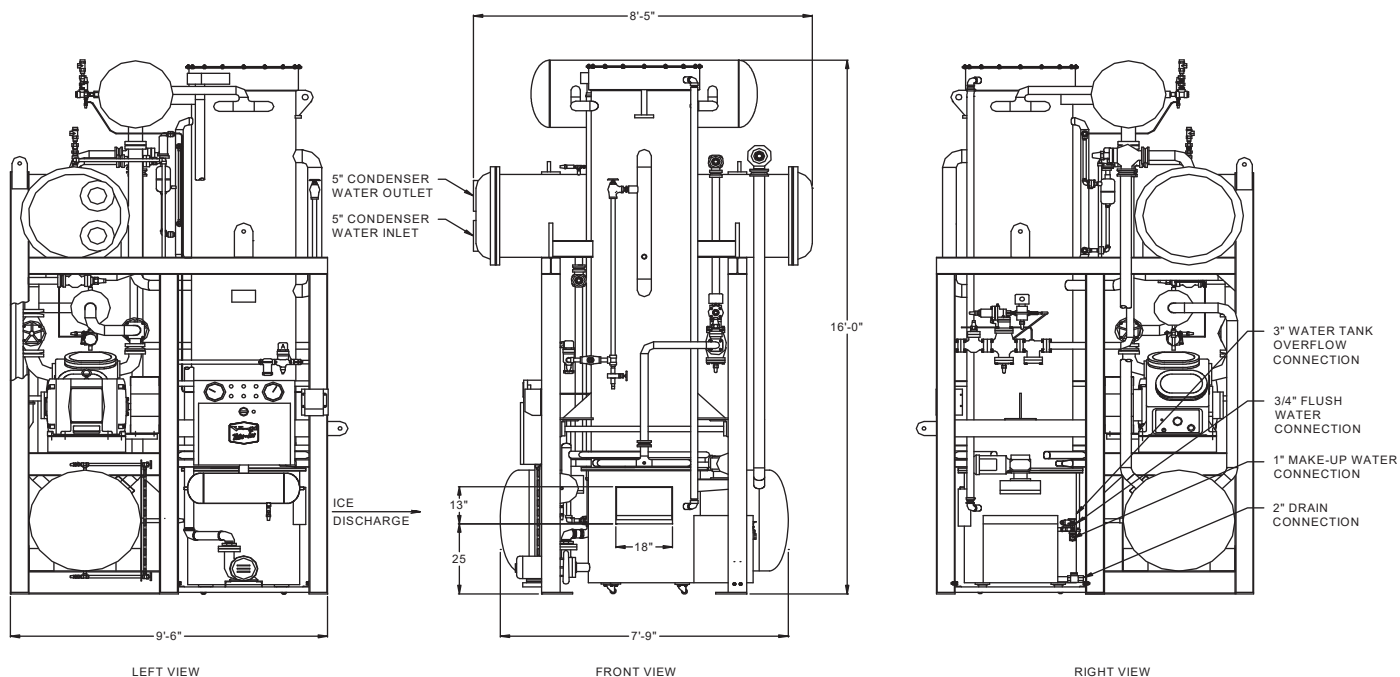
The ice machine shall not be subjected to an atmospheric temperature lower than 50 ° F. (10 ° C.) nor higher than 90 ° F. (32 ° C.) without effect on performance. Water for condensing or ice making purposes shall be non-corrosive.

The water shall be at a constant pressure no less than 30lbs. at the ice machine location. The condition of the water to make satisfactory ice shall be the responsibility of the purchaser.



P34A/F SERIES TUBE-ICE MACHINE

Self Contained P34A (Ammonia), P34F (R404a)



STANDARD CAPACITY, TONS PER 24 HOURS

Water Temperature	MODEL P34A (Ammonia Refrigerant)			MODEL P34F (R404a Refrigerant)		
	7/8" DIA. ICE	1-1/8" DIA. ICE	1-3/8" DIA. ICE	7/8" DIA. ICE	1-1/8" DIA. ICE	1-3/8" DIA. ICE
80 ° F	37.7	43.6	39.3	40.0	44.6	41.3
70 ° F	39.7	46.0	41.5	42.5	47.1	43.7
60 ° F	41.9	48.5	43.9	45.0	49.9	46.5
50 ° F	44.4	51.5	46.7	48.0	53.2	49.5
Shipping Weight	24,500	24,100	23,700	27,000	27,100	26,700
Operating Weight	28,200	27,800	27,400	28,200	27,800	27,400



P34A All Stainless

Model	Ice Machine THR (btu/hr)	Press Drop thru Condenser* (PSIG)	Condenser Water Req'd (GPM)	Water to Tower (° F)	Water from Tower (° F)
P34A	1,852,000	13	375/400**	95	85
P34F	2,309,000	3	500	95	85
*Pressure drop through condenser does not include water regulator.					
** P34A with carbon tubes requires 375 GPM, stainless condenser tubes requires 400GPM					

Capacity rating is average for the model.
Individual machines may vary +/- 5%.
Capacity based on ambient (air) temperature of 90 ° F. (32 ° C.).
Capacity reduced 17% for 50hz. operation.
Makeup water usage includes 20% blowdown.