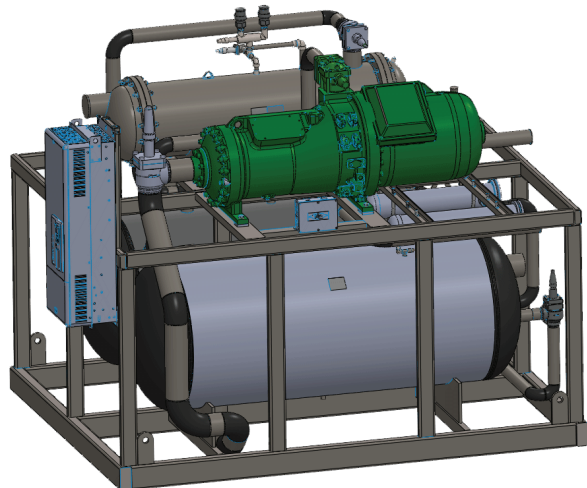


# HFOPAK50 Modular Engine Room

(HFO Package Refrigeration Skid)



### Additional Features:

- ★ Compact footprint for ease of installation
- ★ Accumulator features boil out coil for carryover liquid and subcooling to ice machines
- ★ Discharge gas heating coil in receiver to maintain heat for harvest
- ★ Electronic high level detector in accumulator

With Vogt's new HFOPAK50 package refrigeration skid, Vogt Ice now provides complete low side/high side ice production for packaged ice plants and food processing operations, including meat, poultry, fish and dairy, chemical processing, concrete cooling, as well as other industrial applications.

Designed and engineered to work for your ice production needs, this highside package features hot gas capture for rapid ice harvests as well as high efficiency Bitzer rotary screw compressor technology.

### HFOPAK50 Standard Features:

- ★ Designed for use with high capacity ice machines utilizing HFO refrigerant (currently R513a) designed to accept future HFO refrigerants
- ★ Can use thaw gas from receiver or the compressor discharge
- ★ All relief valves and regulating valves included
- ★ Designed for simple installation requiring only piping to ice machines and cooling tower or remote air/evap condenser
- ★ Bitzer CSH series direct drive twin rotary screw compressor with VFD, integral stop/check on discharge and internal oil separator
- ★ Integrated oil management system
- ★ Color Touchscreen PLC with Intel Pentium Processor
- ★ Can be water cooled or for use with air/evap condenser

### HFOPAK50 Constructed to the following Codes:

- ★ ASHRAE 15
- ★ IIAR 2
- ★ ASME B31.5 Piping Code
- ★ ASME Boiler and Pressure Vessel Code Section VIII, Div. 1.

### PERFORMANCE DATA HFOPAK50

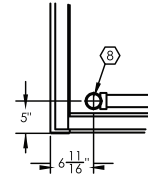
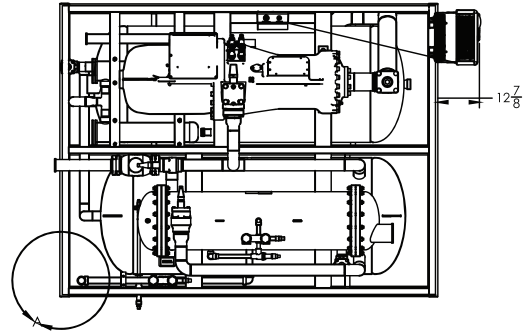
Evap. (SST)		Cond. (SDT)		Cooling Capacity	
°F	°C	°F	°C	TR	kW
30	-1.1	100	37.8	169.7	596.8
15	-9.4	100	37.8	120.8	424.8
0	-17.8	100	37.8	83.6	294

### ELECTRICAL DATA

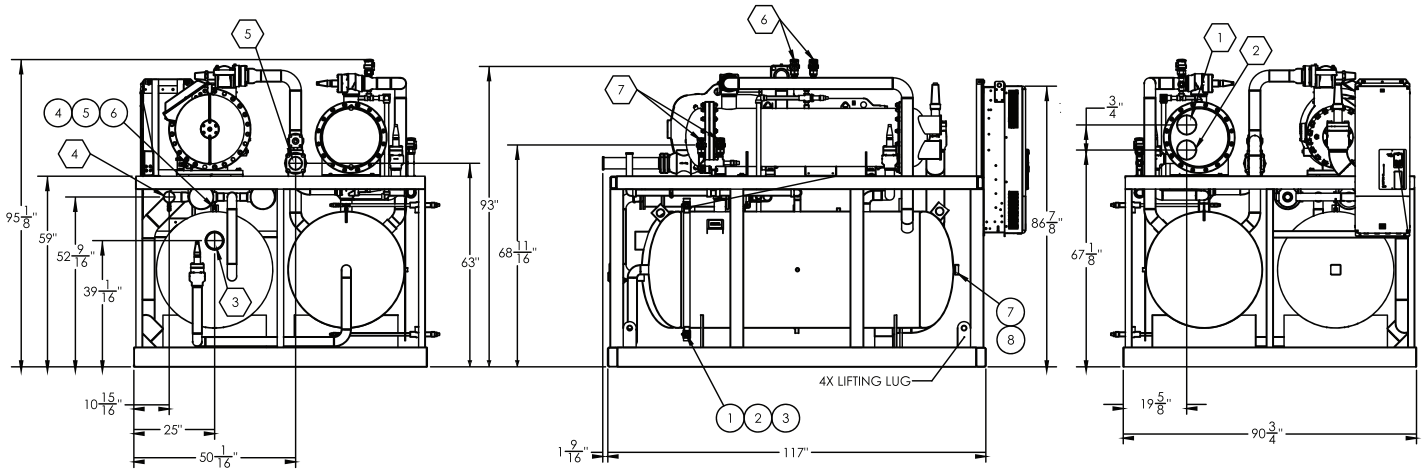
Compressor HP	210
Voltage	460v.,3p.,60hz.
FLA	253



ITEM	CONNECTION	DESCRIPTION
1	CONDENSER FLUID INLET	5" NPS, BW
2	CONDENSER FLUID OUTLET	5" NPS, BW
3	SUC. ACC. SUCTION (WET)	5" NPS BW
4	SUC. ACC. LIQUID OUTLET	2-1/2" NPS
5	HOT GAS DEFROST OUTLET	3" NPS BW
6	CONDENSER GAS PSI RELIEF	1" FPT
7	RECEIVER GAS PSI RELIEF	1" FPT
8	AUXILLARY HOT GAS OUTLET	1-1/2" NPS



DETAIL A  
 SCALE 1 : 12

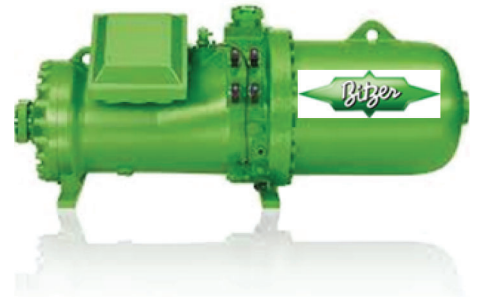


Water cooled version shown

### Complete Remote Refrigeration System

For 50 tons of ice per day including:

Bitzer CSH twin rotary screw compressor, suction accumulator, receiver, oil management system with internal oil separator, integrated control system with all safety alarms, shut offs and touchscreen HMI with water cooled condenser.



### Refrigeration System Options

- ★ Water tower for up to 80 degree F. wet bulb temperature
- ★ Split system air cooled high ambient condenser up to 105 degree F.
- ★ Evaporative cooled condenser for up to 105 degree F. and 80 degree F. wet bulb

### Operating Conditions

The ice machine shall not be subjected to an atmospheric temperature lower than 50 °F. (10 °C.) nor higher than 90 °F. (32 °C.) without effect on performance. Water for condensing or ice making purposes shall be non-corrosive. The water shall be at a constant pressure no less than 30lbs. at the ice machine location. The condition of the water to make satisfactory ice shall be the responsibility of the purchaser.