



Chiller Options

- ★ Water Level & Flow Control Package
- ★ Mechanical Float Valve (installed)
- ★ Surge Drum
- ★ Dual Relief Valves
- ★ Oil Accumulator Drum (Flooded System)
- ★ High Pressure Liquid Line Valve Package (Flooded)
- ★ Liquid Line Valve Package (Recirculated System)
- ★ Suction Line Package
- ★ Refrigerant Level Control Package (Flooded)
- ★ Direct Expansion System Options
- ★ Dual Refrigerant Feeds
- ★ Dual Refrigerant Suction Outlets
- ★ 304L Stainless Steel Construction
- ★ Delete Evaporator Section Panels
- ★ Delete Vent Assembly
- ★ Alternate Reservoirs or None
- ★ 8-1/2" Reservoir Legs
- ★ Additional Reservoir Connections

HTD and HF Series Heat Exchangers

transfer heat from refrigerant on the inside of stainless-steel plates to liquid falling on the outside of the plates. Fluids in the High Temperature Difference (HTD) Series are chilled or heated over large temperature difference (ranging from 5°F and 60°F), and relatively low fluid flow. In the High Flow (HF) Series, fluid is chilled over a narrow temperature difference (between 1°F to 2°F), and a high fluid flow aided by the plate's long, and narrow geometrical configuration.

Chillers are used in a wide range of industries

- ★ Baking Industry Applications
- ★ Food Processing
- ★ Chemical Production
- ★ Concrete Cooling
- ★ Beverage Cooling
- ★ Produce Cooling
- ★ Manufacturing

Benefits of Vogt Falling Film Chillers

- ★ Total Insulation of the chillers
- ★ Easy access for cleaning and inspection
- ★ Freeze-Up is not an issue for all compactable range of liquids
- ★ High efficiency heat transfer system
- ★ Internal Headers and small foot print to fit available space
- ★ Handle various kinds of Fluids – Saline, Moderately Viscous
- ★ Solids ¼ inch or less can pass through
- ★ Vogt Chillers are custom made to meet customers' specific requirements

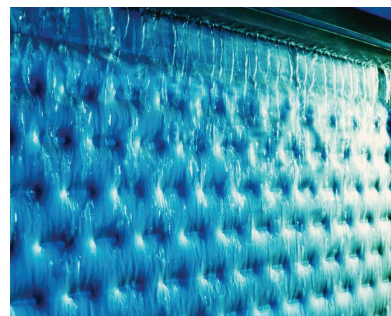
Refrigeration Options

- ★ Ammonia - Flooded or Liquid Recirculation
- ★ R134a - Direct Expansion
- ★ R404a - Direct Expansion
- ★ R513a - Direct Expansion

All Vogt / Turbo evaporator plate products are individually formed at pressures exceeding 900 psi, proof tested to 750 psi, over three times pressure for which it is rated, then subsequently leak tested and proven tight.

Ref. IIAR Std. II, 2014 Sec. 5.13.2.1.

MAWP 250psi.



Vogt Ice LLC

1000 W. Ormsby Avenue
 Louisville, KY 40210
 (800) 853-8648, (502) 635-3000
 info@vogtice.com

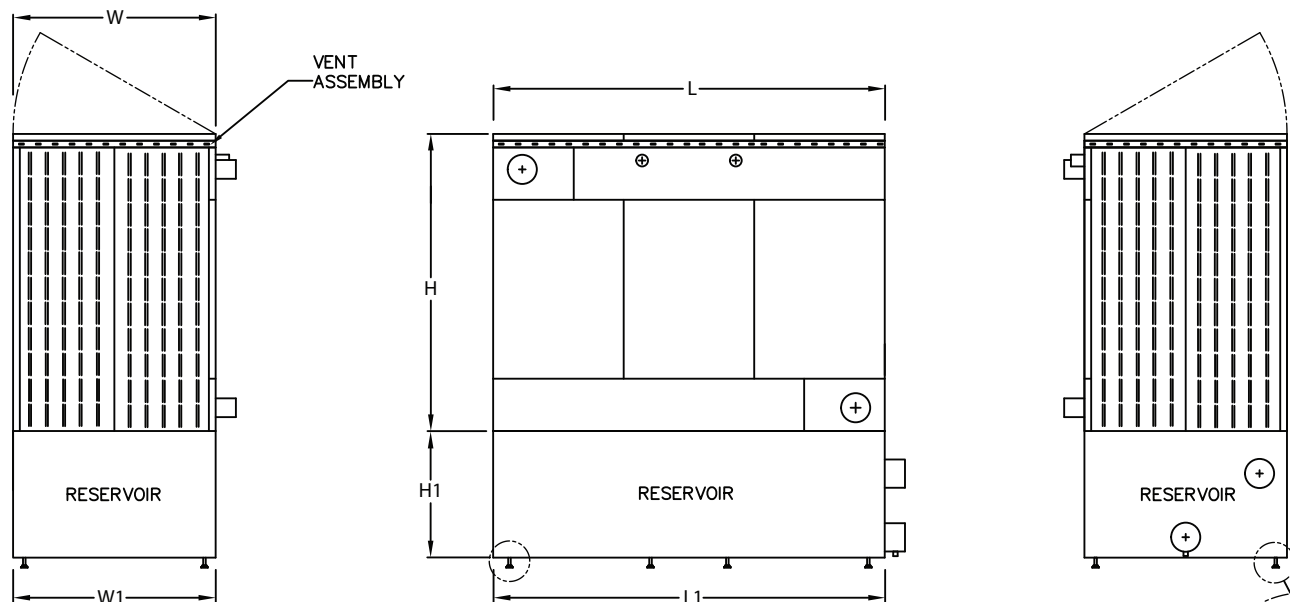


www.vogtice.com



HTD / HF FALLING FILM CHILLERS

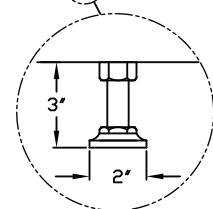
(HTD 48", 72", & 96", HF 144")



CHILLER SPECS

Model	Frame Size	Number of Plates		Dimensions			Standard Sump (Gallons)
		Min	Max	L	W	H*	
HTD "X" 4806	6	1	7	68"	36"	88"	110
HTD "X" 4812	12	7	13	68"	60"	88"	195
HTD "X" 7212	12	8	13	92"	60"	88"	267
HTD "X" 9606	6	1	7	116"	36"	88"	195
HTD "X" 9612	12	7	13	116"	60"	88"	340
HTD "X" 9618	18	14	20	116"	83.5"	88"	482
HTD "X" 9630	30	20	30	116"	83.5"	88"	482
HF "X"-144-06-XX	6	1	7	163"	30"	Consult Factory	
HF "X"-144-12-XX	12	7	13	163"	60"		

*Height dimension includes 2" for vent assembly
Consult factory for additional specs on the HF (High Flow chillers)



LEG DETAIL

RESERVOIR SPECS

Capacity	Plates	Chiller Model	Dimensions			Water Level	Gallons Per Inch	Legs	Capacity (Gallons)
			L1	W1	H1				
STD	1 THRU 6	HTD-48-06	68	36	17½	12½	8.875	6	110
		HTD-96-06	116	36	17½	12½	15.53	6	195
	7 THRU 12	HTD-48-12	68	60	17½	12½	15.53	6	195
		HTD-72-12	92	60	17½	12½	21.35	6	267
	14 THRU 30	HTD-96-12	116	60	17½	12½	27.18	6	340
MEDIUM	1 THRU 6	HTD-96-XX	116	83½	17½	12½	38 1/2	6	482
		HTD-48-06	68	36	37½	32 1/2"	8.875	6	288
	7 THRU 12	HTD-96-06	116	36	37½	32 1/2"	15.53	6	505
		HTD-48-12	68	60	37½	32 1/2"	15.53	6	505
	14 THRU 30	HTD-72-12	92	60	37½	32 1/2"	21.35	6	694
HIGH	1 THRU 6	HTD-96-12	116	60	37½	32 1/2"	27.18	6	883
		HTD-96-XX	116	83½	37½	32 1/2"	38 1/2	6	1,252
	7 THRU 12	HTD-48-06	68	60	37½	32 1/2"	15.53	6	505
		HTD-96-06	116	60	37½	32 1/2"	27.18	6	883
	14 THRU 30	HTD-48-12	68	92	37½	32 1/2"	24.4	8	793
EXTRA HIGH	1 THRU 30	HTD-72-12	92	92	37½	32 1/2"	33.56	8	1,091
		HTD-96-12	116	92	37½	32 1/2"	42.71	8	1,388
		HTD-48-XX	68	92	45½	40 1/2"	24.4	8	988
		HTD-72-XX	92	92	45½	40 1/2"	33.56	8	1,359
		HTD-96-XX	116	92	45½	40 1/2"	42.71	8	1,730