

P18AL SERIES TUBE-ICE MACHINE

10 Ton per Day Ammonia Low-Side



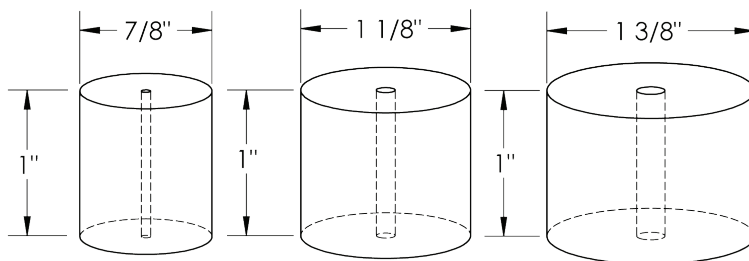
The P18AL Series with a capacity of 10 tons of ice per day is an ammonia low-side Tube-Ice machine designed to operate with a dedicated ammonia high-side or on a central refrigeration system. With the small footprint and the availability of crushed ice and cutterless options, the P18AL is ideal for use in many industrial applications with existing ammonia refrigeration systems.

Heavy-duty industrial construction, automatic operation, energy efficiency and the best warranty in the business make Vogt Tube-Ice machines the only "clear" choice for your ice making needs.

P18AL Standard Features:

- ★ 25 Year Evaporator Warranty
- ★ Up to 12 tons of ice per day
- ★ Voltage - 230v.,3p.,60hz.
- ★ Control Voltage - 230v.,1p.,60hz
- ★ UL 508A Industrial Control Panel
- ★ Ammonia flooded operation
- ★ Manufactured in accordance with A.S.M.E. code
- ★ Standard ice length 1"

P18AL Tube-Ice Available in Three Ice Sizes:



Not to Scale

P18AL Options:

- ★ Voltage -460 v.,3p.,60hz.
- ★ Voltage - 400v.,3p.,50hz.
- ★ Voltage - 575v.,3p.,60hz.
- ★ 120v Controls
- ★ PLC Control panel (programmable logic controller)
- ★ Power monitor
- ★ Cutter for 1-1/2" long ice
- ★ Cutter for crushed ice
- ★ All stainless steel
- ★ "CE" Approval (400v, 50hz only)
- ★ Canadian Registration Number (CRN)

Operating Conditions

The ice machine shall not be subjected to an atmospheric temperature lower than 50 ° F. (10 ° C.) nor higher than 90 ° F. (32 ° C.) without effect on performance. Water for ice making purposes shall be non-corrosive.

The water shall be at a constant pressure no less than 30 psi at the ice machine location. The condition of the water to make satisfactory ice shall be the responsibility of the purchaser.

Vogt Ice LLC

1000 W. Ormsby Avenue
Louisville, KY 40210
(800) 853-8648, (502) 635-3000
info@vogtice.com

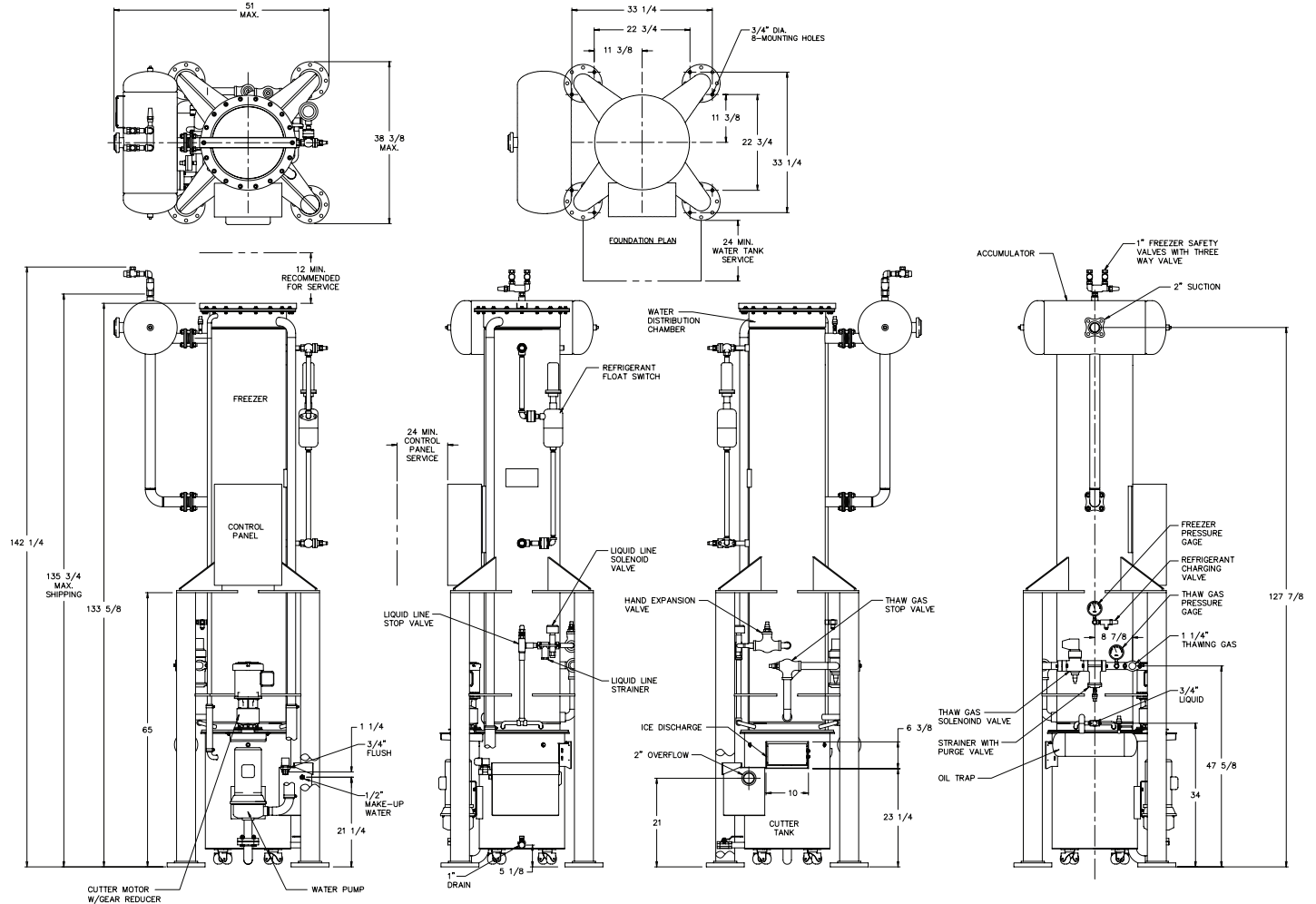


www.vogtice.com



P18AL SERIES TUBE-ICE MACHINE

10 Ton per Day Ammonia Low-Side



Water Temperature	P18AL STANDARD CAPACITY TONS OF ICE PER 24 HOURS @ 10° F SUCTION		
	7/8" Diameter Ice	1-1/8" Diameter Ice	1-3/8" Diameter Ice
80 °F	14.0	10.3	7.6
70 °F	14.5	10.7	8.0
60 °F	15.1	11.2	8.4
50 °F	15.8	11.8	8.8
Shipping Weight			
Operating Weight			

CAPACITY TABLE, TONS OF ICE PER 24 HOURS (AT SUCTION TEMPERATURE ° F)												
Water Temperature	0 °F			5 °F			15 °F			20 °F		
	7/8"	1-1/8"	1-3/8"	7/8"	1-1/8"	1-3/8"	7/8"	1-1/8"	1-3/8"	7/8"	1-1/8"	1-3/8"
80 °F	17.9	13.6	10.3	16.1	12.0	9.0	11.6	8.4	6.1	8.9	6.3	4.6
70 °F	18.6	14.2	10.8	16.7	12.5	9.4	12.1	8.8	6.5	9.3	6.6	4.8
60 °F	19.3	14.8	11.3	17.3	13.1	9.9	12.6	9.2	6.8	9.8	7.0	5.1
50 °F	20.1	15.4	N/A	18.1	13.7	10.4	13.2	9.7	7.2	10.3	7.4	5.4

Capacities based on the following:

- Flooded ammonia liquid feed
- Blowdown of 10 gallons per cycle
- Ammonia discharge pressure of 185psig
- Harvest cycle of 3.0 minutes