

HEB Series Parts List

Control Panel Components

<u>Part Number</u>	<u>Req'd</u>	<u>Description</u>
12A7503E22	1	THAW TIMER, 8 PIN PLUG-IN, 100-240V., 50/60HZ
12A7503E2201	1	TIMER BASE #0T08-PC, EIGHT PIN PLUG-IN
12A7516E28	1	A/B CONTACTOR, 37-AMP, 3-POLE, 208/240V W/1-NO AUX. Compressor Motor Contactor or Control Contactor Replaces Furnas 12A7516E05 & C/H 12A7516E17 (Auxillary below required when replacing Furnas or C/H)
12A7518E30	1	A/B AUX. CONTACT, 3A, 1 NO/1 NC, (SIDE MOUNT) Auxillary contact for A/B compressor contactor above
12A7518E15	1	AUX CONTACT / CUTLER-HAMMER #C32OKGS3, 1-NO/1-NC For C/H 12A7516E17
12A7516E43	1	A/B CONTACTOR, 9-AMP, 4-POLE, 208/240V W/2-NO,2-NC Reversing/CR Relay (Replaces C/H 12A7517E18 or Furnas 12A7517E16), CR Relay requires aux. contact 12A7518E30
12A7518E09	1	CONTACT AUX N.C. FURNAS #49D22 For Furnas 12A7516E05 Compressor Contactor
12A7518E08	1	CONTACT AUX N.O. FURNAS #49D22 For Furnas 12A7516E05 Compressor/Control Contactor
12A7516E09	1	CONTACTOR / CUTLER-HAMMER 2-POLE, 10AMP For Air-Cooled Condenser
12A7503E12	1	COMPRESSOR DELAY TIMER, ICM #BMS230A1X5, 230VAC
12A2117G02	2	THERMOSTAT JOHNSON CONTROLS
12A2117E04	2	FREEZER PRESSURE SWITCH-R22
12A7502E07	2	FUSE HOLDER,LITTEL FUSE SHOCK
12A7504E1	2	CONTROL CIRCUIT FUSE,2.5 AMP (ORDER MULTIPLES OF 5)
12A7515E03	2	CIRCUIT BREAKER 2.5 AMP PUSH BUTTON (CONTROL CIRCUIT)
12A7515E01	1	CIRCUIT BREAKER 2.5 AMP,AIRPAX Cutter Motor Circuit Breaker (1/4HP)
12A7515E17	1	CIRCUIT BREAKER 5.5 AMP, AIRPAX Cutter Motor Circuit Breaker (1/2HP)
12A7515E06	1	CIRCUIT BREAKER 6.0 AMP,AIRPAX Water Pump Circuit Breaker (Dual Voltage Pump)
12A7515E05	1	CIRCUIT BREAKER 3.0 AMP,AIRPAX
12A7515E07	1	CIRCUIT BREAKER 4.5 AMP,AIRPAX
12A7515E04	1	CIRCUIT BREAKER 5.0 AMP,AIRPAX
12A7500E07	1	SELECTOR SWITCH, 3-POSITION A/B
12A7500E02	1	SWITCH,PUSH-BUTTON,NON-LIGHTED SPST RED N-O "Manual Harvest" Switch
12A7500E03	1	SWITCH,PUSH-BUTTON,NON-LIGHTED SPST GREEN N-O "Start" Switch
12A7500E01	2	SWITCH,PUSH-BUTTON,LIGHTED,SPS "On-Off" or "Clean" Switch

HEB Series Parts List

Control Panel Components (Con'd)

<u>Part Number</u>	<u>Req'd</u>	<u>Description</u>
12A7520E09	2	PILOT LIGHT,RED,250V OSLO (SQ w/RECT. MOUNT HOLE) "Cylinder Ice" or "Crushed Ice" Light
12A7520E1	2	PILOT LIGHT,AMBER,250V OSLO (SQ w/RECT. MOUNT HOLE) "Cutter Overload" or "Pump Overload" Light
12C3000D32	1	SWITCH BOX COVER FOR HE SERIES (PLASTIC)

Additional Electrical Components

<u>Part Number</u>	<u>Req'd</u>	<u>Description</u>
12A2117F05	1	CONDENSER FAN CONTROL SWITCH Air-cooled units
12A2117D01	1	HI/LOW PRESSURE SWITCH
12A2117B03	1	THAWING GAS PRESSURE SWITCH
12A2117A01	1	OIL PRESSURE SWITCH, R12/22, P28AA-2C, 60SEC DELAY Optional Oil Failure Switch
12A7519E06	1	TRANSFORMER 1.5 KVA P-240/480V, S-120/240V, 50/60HZ Control Circuit Transformer for 460V Water-Cooled
12A7519E08	1	TRANSFORMER 3 KVA P-240/480V, S-120/240V, 50/60HZ Control Circuit Transformer for 460V Air-Cooled

Freezer Components

<u>Part Number</u>	<u>Req'd</u>	<u>Description</u>
12B2570F0101	1	HE(B) SERIES FREEZER ASSEMBLY W / 1" TUBES
12B2570F0102	1	HE(B) SERIES FREEZER ASSEMBLY W / 1-1/4" TUBES
12A2600G01	1	FREEZER COVER GASKET 13" OD X 11 11/16" ID X 3/16"
12A2145C09	1	COVER, FREEZER, 12" TYPE 304 CAST STAINLESS STEEL
12A2222H1118	8	STUD BOLT, 3/8"-16NC X2 3/4"LG
12A2240H4109	8	NUT, WING, BRASS, 3/8"-16NC
12A2250A109	8	WASHER, CUT 3/8" x 7/8" O.D. SS
12A4200L0404	1	RELIEF VALVE #3020 SET @ 275#, 1/2" MPT x 5/8" SAE
12A4200G0301	1	CHARGING VALVE, 3/8 MPT X 1/2 SAE FLARE
12A2451R01	1	REDUCER WITH GASKET 1/2" SAE X 1/4" SAE
12A2451C01	1	CAP, WC, 1/4" FLARE, WITH NEOPRENE SEAL
12A4200R0702	1	ROTA-LOCK VALVE VERTICAL 7/8" ID SWT x 1-1/4-12 THREAD Liquid feed/Thawing gas
12A4200G0201	1	VALVES, 1/4" MPT X 1/4" SAE Freezer Pressure Switch Stop Valve
12A2600T01	1	ROTA-LOCK PRIMORE TEFLON SEAL FOR 1-1/4-12 THREAD
12B2185N11	78	1" WATER DISTRIBUTOR SANOPRENE NO VENT
12B2185N21	48	1-1/4" WATER DISTRIBUTOR SANOPRENE NO VENT
12A2055B02		BRUSH, STAINLESS STEEL #GTC210 FOR 1" TUBES
12A2055B04		BRUSH, STAINLESS STEEL #GTC210 FOR 1 1/4" TUBES

HEB Series Parts List

Freezer Components (Con'd)

<u>Part Number</u>	<u>Req'd</u>	<u>Description</u>
12A4009R01		PLUG, RUBBER 7/8" OD X 2" LG FOR 1" TUBES
12A2215H1116	1	CAP SCREW, 3/8"-16NC X 2-1/4" LONG <i>(Use this bolt for 1" tubes)</i>
12A2250A109	2	WASHER, CUT 3/8" x 7/8" O.D. SS <i>(Use this washer for 1" tubes)</i>
12A4009R02		PLUG, RUBBER 1"OD X 2 1/2"LG FOR 1-1/4" TUBES
12A4009R03		PLUG, RUBBER 1 1/4"OD X 2 1/2" FOR 1-1/2" TUBES
12A2215H1119	1	CAP SCREW, 3/8"-16NC X 3" LONG <i>(Use this bolt for 1-1/4" or 1-1/2" tubes)</i>
12A2250A12	2	WASHER, CUT 3/8" x 1" O.D. SS <i>(Use this washer for 1-1/4" or 1-1/2" tubes)</i>
12A2240A1109	1	NUT, HEX 3/8"-16NC S.S.

Compressors / Components

<u>Part Number</u>	<u>Req'd</u>	<u>Description</u>
12A2110M22	1	COMPRESSOR, MANEUROP HERMETIC MT-22JC-3MVE <i>HE10 Models, 208/230V-3P-60HZ</i>
12A2110M24	1	COMPRESSOR,MANEUROP HERMETICD MT22JC4LVE <i>HE10 Models, 460V-3P-60HZ or 380/400V-3P-50HZ</i>
12A2110B22	1	COPELAMATIC COMPRESSOR, ERC1-0200-TAC-213 <i>HE20 Models, 208/230V-3P-60HZ or 200V-3P-50HZ</i>
12A2110B24	1	COPELAMATIC COMPRESSOR, ERC1-0200-TAD-209, <i>HE20 Models, 460V-3P-60HZ or 380/400V-3P-50HZ</i>
12A2110A22	1	CARLYLE SEMI-HERMETIC COMPRESSOR-2HP 208/230V-3P <i>HE30 Models, 208/230V-3P-60HZ</i>
12A2110A24	1	CARLYLE SEMI-HERMETIC COMPRESSOR-2HP 400/460V-3P <i>HE30 Models, 460V-3P-60HZ or 380/400V-3P-50HZ</i>
12A2110A32	1	CARLYLE SEMI-HERMETIC COMPRESSOR-5HP 208/230V-3P <i>HE40 Models, 208/230V-3P-60HZ or 200V-3P-50HZ</i>
12A2110A34	1	CARLYLE SEMI-HERMETIC COMPRESSOR-5HP 400/460V-3P <i>HE40 Models, 460V-3P-60HZ or 380/400V-3P-50HZ</i>
12A7509E09	1	CRANKCASE HEATER #14SS-5358-23-54C42, 65 WATT <i>HE20, HE30 & HE40 Compressor</i>
12A7509E13K	1	SCROLL CRANKCASE HTR KIT, 70WATTS FOR HES30/40 <i>HE10 or HE20 (Converted to Scroll) (Replaces 40watt)</i>
12A4200L0201	1	RELIEF VALVE #3012 SET @ 400#, 1/4" NPT x 3/8" SAE <i>HE20 Air-Cooled With Copelamatic Compressor</i>
12A2110P0301		COMPRESSOR, VALVE PLATE 998-06 <i>HE20 With Copelamatic Compressor</i>
12A2110P0201		COMPRESSOR VALVE PLATE PKG FOR CARLYLE O6D <i>HE30 - 1 Req'd, HE40 - 2 Req'd</i>
12A2110P0215	1	CARLYLE COMPRESSOR PUMP END BEARING HEAD ASSY <i>HE30 & HE40</i>

HEB Series Parts List

Compressors / Components (Con'd)

<u>Part Number</u>	<u>Req'd</u>	<u>Description</u>
126608	1	GASKET SET FOR CARLYLE 06D COMPRESSOR HE30 & HE40
12A7523E01	2	OVERLOAD KLIXON 8347A23-54 HE30, 208/230V
12A7523E03	2	OVERLOAD KLIXON 8347A23-63 HE40, 208/230V
12A4200S05	1	CARLYLE SERVICE VALVE, 5/8" ODS Discharge Service Valve for HE30
12A4200S07	1	CARLYLE SERVICE VALVE, 7/8" ODS Suction Service Valve for HE30 & HE40 Discharge
12A4200S09	1	CARLYLE SERVICE VALVE, 1-1/8" ODS Suction Service Valve for HE40
12AHEB01	1	SCROLL CONVERSION KIT FOR HE10 OR HE20
12A2000A1	1	SUCTION ACCUMULATOR, REF. RESEARCH 1-1/8" Recommended for use with scroll conversion kit
12A2115KS061	1	CONDENSER, HDD-61, 50/50 SPLIT COIL SINGLE PHASE Required for HE10 air-cooled with scroll conversion kit
126609	2	CARLYLE SERVICE VALVE GASKET HE30 - Suction & Discharge, HE40 Discharge
12661	1	CARLYLE SERVICE VALVE GASKET HE40 - Suction

Cutter Drive/Cutter Internals

<u>Part Number</u>	<u>Req'd</u>	<u>Description</u>
12A2900M0507	1	CUTTER MOTOR, 1/2HP 208/230V-1P-50/60HZ Replaces 1/4HP motor (Requires 5.5 amp CB)
12A4030R12	1	GEAR REDUCER, GROVE 10:1 WASHDOWN W/VENT PLUG
19T3020C01	1	GEAR OIL, 10 OUNCE BOTTLE, TEXACO CYGNUS
19T2615D01	1	CUTTER DRIVE GEAR TI-59 W/O HUB
12A2160H0101	1	CUTTER DRIVE GEAR HUB 5/8" BORE
12A2215F1112	3	CAP SCREW, 1/4"-20NC X 1 1/4" Long SS Hub mounting screws
12A2250B107	3	WASHER, LOCK 1/4" SS (300 SERIES)
12B2020R04	1	HE (UHMW) CUTTER BEARING
12A3040S02	1	CUTTER BEARING ROLL PIN 3/16" X 1/2"
19T2025B0103	1	BEARING BRACKET FOR 12" CUTTER
19T2170D01	1	ICE DEFLECTOR DOOR
12A4071S03	1	RIVET, 3/16 X 2 1/4 FLAT HD. FOR ICE DELECTOR DOOR
12A4073R04	1	DEFLECTOR ACTIVATING ROD
19T2163D0101	1	CUTTER DISC, STAINLESS STEEL FOR 12" CUTTER

HEB Series Parts List

Cutter Drive/Cutter Internals (Con'd)

<u>Part Number</u>	<u>Req'd</u>	<u>Description</u>
12A3040S01	1	CUTTER DISC ROLL PIN, 1/4" X 1 1/2"
19T4073R07	1	CUTTER DISC ROLL PIN TOOL
19T2160C0101	1	HE CUTTER ASSEMBLY, INVESTMENT CAST SS
19T2010A01	1	ADAPTOR PLATE FOR HE 1" DIAMETER x 3/4" LG ICE <i>Mounting screws below thread directly into lower plate</i>
12A2226F1108	4	MACHINE SCREW, FLAT HEAD SS, 1/4" x 3/4"
19T2090C04	1	HE ICE CHUTE ASSEMBLY FOR DUAL ICE
19T2090C07	1	HE ICE CHUTE ASSEMBLY FOR SINGLE TYPE ICE

Water Pump/Circulating Water

<u>Part Number</u>	<u>Req'd</u>	<u>Description</u>
12A4200H0401	1	FLOAT VALVE, 1/2" ROBERTS #RM214
12A4020Z14	1	HE SERIES WATER PUMP REPLACEMENT KIT, 60HZ <i>Replaces AP pump, includes pump, fittings, bracket & hoses</i>
12A4020Z15	1	HE SERIES WATER PUMP REPLACEMENT KIT, 50HZ <i>Replaces AP pump, includes pump, fittings, bracket & hoses</i>
12A4080S21	1	SEAL/IMPELLER KIT 60HZ GORMAN-RUPP WATER PUMP
12A4080S22	1	SEAL/IMPELLER KIT 50HZ GORMAN-RUPP WATER PUMP
12A2450E29	1	SUCTION ELBOW FOR GORMAN-RUPP WATER PUMP
12A2450E30	1	DISCHARGE ELBOW FOR GORMAN-RUPP WATER PUMP
12A4200G0103	1	VALVE, POLYPROPYLENE AIR COCK 1/4" MPT X 1/4" TUBING
12A4080S04	1	SEAL ASSEMBLY #397012 FOR A/P PUMP
126628AP		PUMP HOUSING O-RING #391015 FOR A/P PUMP
12A4020Y02	1	PUMP, IMPELLER #391046 FOR A/P PUMP 60HZ (12A4020A06)
12A4020Y04	1	PUMP, IMPELLER #391531 FOR A/P PUMP 50HZ (12A4020A07)
12A2240C4111	1	BRASS HEX NUT FOR MAKEUP FLOAT VALVE
12A2475T0404	1	ELL, S.S. 1/2" FPT 90 DEG.
12A2452M05	1	ADAPTOR, 1/2" MPT x 3/8" TUBING
12A2452E07	1	ELL, SWIVEL, MALE, 90 DEG. 3/8" MPT x 3/8" TUBING
19T1501S0505	1	WATER FLOAT BOX COVER FOR HE SERIES
12A4181T12	2FT	TUBING, POLYETHYLENE 3/8" OD x 1/4" ID <i>Make-up water tubing (priced per foot)</i>
12A2600G12	1	WATER TANK GASKET 16 1/8" OD x 14" ID x 3/16" THK
12A4181T06	5FT	TUBING, TYGON B-44-3, 1-1/2" OD x 1-1/4" ID <i>Pump discharge tubing (priced per foot)</i>
12A4181CL02	1	PUMP SUCTION TUBING, 2" OD x 1-1/2" ID x 4" LONG
12A4200G0101	1	PET COCK VALVE, 1/8" MPT x 1/4" HOSE
12A2451U19	1	CONNECTOR, MALE, BRASS 1/4" MPT X 1/4" TUBING
12A2451U2	1	CONNECTOR, FEMALE, BRASS 1/8"
12A4181T11	2	TUBING, POLYETHYLENE 1/4OD X .170" ID <i>Pet Cock Valve Tubing (priced per foot)</i>
12A4181T04	3FT	TUBING, TYGON B-44-3, 1-1/4" OD x 1" ID <i>Water tank drain tubing (priced per foot)</i>
12A4020Z09	1	HE WATER PUMP CHECK VALVE KIT <i>(Prevents water tank overflow at beginning of harvest cycle)</i>

HEB Series Parts List

Water-Cooled Condenser

<u>Part Number</u>	<u>Req'd</u>	<u>Description</u>
12A2115S0401	1	CONDENSER, STANDARD KH2X, 8710 HE10 & HE20
12A2115S0301	1	CONDENSER, STANDARD QC3X #8710-41 HE30
12A2115S0201	1	CONDENSER, STANDARD QC5X #8710-43 HE40
12A2055B01	1	CONDENSER CLEANING TOOL, ADJUSTABLE 3/8" x 1/2" ID
12659623	1	GASKET SET-K2X, KH2X & K3X "STANDARD" CONDENSER HE10, HE20 (12-1/2" x 4-1/2")
1265961	1	GASKET SET-K10X, KH10X, QC3X & QC5X "STANDARD" COND. HE30 & HE40 (16" x 5-1/2")
12A4200E0605	1	WATER REGULATING VALVE, 3/4" HE10, HE20 & HE30
12A4200E0802	1	WATER REGULATING VALVE, 1" FPT HE40
12A4200E0402	1	WATER REGULATING VALVE, 1/2" HP HE10, HE20 & HE30 High pressure (above 90 psi)
12A4200E0801	1	WATER REGULATING VALVE, 1" METREX HE40 High pressure (above 90 psi)

Air-Cooled Condenser

<u>Part Number</u>	<u>Req'd</u>	<u>Description</u>
12A2115KS041	1	CONDENSER, HDD-41, 50/50 SPLIT COIL SINGLE PHASE HE10
12A2115KS061	1	CONDENSER, HDD-61, 50/50 SPLIT COIL SINGLE PHASE HE20 (Or HE10 with Scroll Conversion)
12A2115KS101	1	CONDENSER, HDD-101, 50/50 SPLIT COIL SINGLE PHASE HE30
12A2115KS131	1	CONDENSER, HDD-131, 50/50 SPLIT COIL SINGLE PHASE HE40
12A2900M0401	1	MOTOR 1/3HP GE#5KCP35MN34GS (KRAMER 049-161) HDD-61 (HE20)
12A2900M0506	2	MOTOR, 1/2HP, 208/230-1-60HZ, (KRAMER 049-158) HDD-101, HDD-131 (HE30 & HE40)
12A2115P0301	1	CONDENSER, FAN BLADE 039-193, 30" HDD-61 (HE20)
12A2115P0401	2	CONDENSER, FAN BLADE 213455000, 24" HDD-101, HDD-131 (HE30 & HE40)
12A2105C04	1	COIL, #0MKC-2 FOR SPORLAN N/O 208-240V.,50/60HZ

HEB Series Parts List

Air-Cooled Condenser (Con'd)

<u>Part Number</u>	<u>Req'd</u>	<u>Description</u>
12A2117G05		CONTROL, THERMOSTAT, PENN #A19 <i>(1 Req'd on HDD41 & HDD61, 2 Req'd on HDD101 & HDD131)</i>
12A4200A0503	1	SOLENOID VALVE, 5/8" NORMALLY OPEN HDD-61 (HE20)
12A4200A0704	1	SOLENOID VALVE, 7/8" NORMALLY OPEN HDD-101, (HE30)
12A4200A0902	1	SOLENOID VALVE, 1-1/8" NORMALLY OPEN HDD-131 (HE40)
12A2105C04	1	COIL, #0MKC-2 FOR SPORLAN N/O 208-240V.,50/60HZ
12A4199V42	1	REPAIR KIT #KS-0B14/0E14 FOR SPORLAN 5/8" N/O VALVE
12A4199V44	1	REPAIR KIT #KS-0B25/0E25 FOR SPORLAN 7/8" N/O VALVE
12A4199V45	1	SUCTION STOP VALVE REPAIR KIT FOR SPORLAN 0E34S290
12A4200B0401	1	CHECK VALVE, 1/2" O.D. HDD-61 (HE20)
12A4200B0502	1	BALL CHECK VALVE, 5/8" O.D. HDD-101, (HE30)
12A4200B0701	1	CHECK VALVE, 7/8" O.D. HDD-131 (HE40)
12A4200L0201	1	RELIEF VALVE #3012 SET @ 400#, 1/4" NPT x 3/8" SAE
12A7516E11	1	CONTACTOR / CUTLER-HAMMER 10AMP, 3-POLE Replaces Furnas #45CA20AG
12A7512E13	1	ENCLOSURE, HOFFMAN #A-8R64, 8" x 6" x 4"
12A4200G0408	1	BALL VALVE, 1/2" O.D. WITH SEAL CAP
12A4200G0502	1	BALL VALVE, 5/8" O.D. WITH SEAL CAP
12A4200G0702	1	BALL VALVE, 7/8" O.D. WITH SEAL CAP
12A4200G0902	1	BALL VALVE, 1-1/8" O.D. WITH SEAL CAP

BALL VALVE USAGE: HDD-61 (1/2" & 5/8"), HDD-101 (5/8" & 7/8"), HDD131 (7/8" & 1-1/8")

**Aeroquip fittings for connection of air-cooled condenser no longer stocked. Line sizes are as follows:
HE10 (1/2" & 5/8"), HE20 (5/8" & 3/4"), HE30 (5/8" & 7/8"), HE40 (7/8" & 1-1/8")**

Receiver Parts

<u>Part Number</u>	<u>Req'd</u>	<u>Description</u>
12A2625G08	1	GAGE GLASS 1/2" X 18 7/8" LONG For Brass Valves (Started use on 1991 models)
12A2625G06	1	GAGE GLASS 1/2" X 15-1/8" LONG For Brass Valves (Used on 1989-90 models)
12A4200J0405	1	UPPER GAGE COCK VALVE, HENRY 1/2" FPT Replaced Brass Valve 12A4200J0403 - May 1999
12A4200J0406	1	LOWER GAGE COCK VALVE, HENRY 1/2" FPT Replaced Brass Valve 12A4200J0404 - May 1999
12A3050C0301	2	PIPE NIPPLE, 1/2" X 1-1/2" LONG
12A2625G10	1	GAGE GLASS, 1/2" X 20" LONG For Steel Valves (Started use in May 1999)

HEB Series Parts List

Receiver Parts (Con'd)

<u>Part Number</u>	<u>Req'd</u>	<u>Description</u>
19T2635G07	1	GAGE GLASS GUARD SET, 18 5/8" <i>Use with 18-7/8" glass and 20" glass</i>
12A2635G02	1	GAGE GLASS, GUARD SET 14" LG <i>Use with 15-1/8" glass</i>
12A4199V26	2	GAGE GLASS PACKING O-RING FOR 1/2" DIAMETER
12A4200L0402	1	RELIEF VALVE #3020 SET @ 350#, 1/2" MPT x 5/8" SAE
12A4200B0502	1	BALL CHECK VALVE, 5/8" O.D.
12A4200R0401	1	ROTA-LOCK VALVE HORIZONTAL 1/2" ID SWT x 1-14 THREAD <i>King Valve</i>
12A2600T02	1	ROTA-LOCK PRIMORE TEFLON SEAL FOR 1-14 THREAD
12A4200R0702	1	ROTA-LOCK VALVE VERTICAL 7/8" ID SWT x 1-1/4-12 THREAD <i>Liquid Return (Water-cooled units only)</i>
12A4200R0701	2	ROTA-LOCK VALVE HORIZ. 7/8" ID SWT x 1-1/4-12 THREAD <i>Thawing Gas & Liquid Return (Air-cooled units)</i>
12A2600T01	2	ROTA-LOCK PRIMORE TEFLON SEAL FOR 1-1/4-12 THREAD

Note: Valve core and 1/4" seal cap required for Rota-lock valves

12A2451C01	1	CAP, WC, 1/4" FLARE, WITH NEOPRENE SEAL
12A2451V01	1	VALVE CORE FOR 1/4" ACCESS VALVE

Thawing Gas Line

<u>Part Number</u>	<u>Req'd</u>	<u>Description</u>
12A4200A0707	1	7/8" SOLENOID VALVE, SPORLAN MB25 W/COIL <i>Thawing gas solenoid (D) (Replaces Jackes Evans RB21MS7)</i>
12A2105C16	1	COIL, #MKC-2 FOR SPORLAN 208/240V-50/60HZ
12A4199V39	1	REPAIR KIT #KSB25/E25 FOR SPORLAN ME25S
126232RB	1	COIL #R-23MM W/HOUSING 208/240 for JACKES-EVANS
12A4199V07	1	REPAIR KIT #76754 FOR JE #RB21MS7 (7/8") VALVE
12A2117B03	1	THAWING GAS PRESSURE SWITCH
12A4200R0701	1	ROTA-LOCK VALVE HORIZ. 7/8" ID SWT x 1-1/4-12 THREAD <i>Thawing gas stop valve (Receiver)</i>
12A4200R0702	1	ROTA-LOCK VALVE VERTICAL 7/8" ID SWT x 1-1/4-12 THREAD <i>Thawing gas stop valve (Freezer)</i>
12A2600T01	1	ROTA-LOCK PRIMORE TEFLON SEAL FOR 1-1/4-12 THREAD
12A2451C01	1	CAP, WC, 1/4" FLARE, WITH NEOPRENE SEAL
12A2451V01	1	VALVE CORE FOR 1/4" ACCESS VALVE

HEB Series Parts List

Liquid Line

<u>Part Number</u>	<u>Req'd</u>	<u>Description</u>
12A4200C0302	1	EXPANSION VALVE, SPORLAN #EBFV-A-C 3/8" IN x 1/2" OUT HE10 & HE20
12A4200C0301	1	EXPANSION VALVE, SPORLAN #EBFV-C-C 3/8" IN x 1/2" OUT HE30 & HE40
12A4200A0411	1	1/2" SOLENOID VALVE, SPORLAN MB9 W/COIL Liquid line solenoid (A) (Replaces Jackes Evans RB9MS4)
12A2105C16	1	COIL, #MKC-2 FOR SPORLAN 208/240V-50/60HZ
12A4199V39	1	REPAIR KIT #KSB25/E25 FOR SPORLAN ME25S
126232RB	1	COIL #R-23MM W/HOUSING 208/240 for JACKES-EVANS
12A4199V02	1	REPAIR KIT #76750 FOR JE #RB9MS4 (1/2") VALVE
12A4200R0401	1	ROTA-LOCK VALVE HORIZONTAL 1/2" ID SWT x 1-14 THREAD King Valve
12A2600T02	1	ROTA-LOCK PRIMORE TEFLON SEAL FOR 1-14 THREAD
12A2405W0002	1	BUSHING, WC, FLUSH, 1/2" ODF X 3/8" ODC
12A4140S04	1	STRAINER, 1/2" ODS Y-TYPE HENRY
12A2195D02	1	DRIER, SPORLAN #C304, 1/2" SAE
12A2710H12	1	HEAT-EXCHANGER, DOUCETTE, PRE ASSY HE10, 20, 30 HE10, HE20, & HE30
12A2710H11	1	HEAT-EXCHANGER, DOUCETTE 1-1/8" x 7/8", PRE ASSY HEC40 HE40

Discharge Line & Oil Return

<u>Part Number</u>	<u>Req'd</u>	<u>Description</u>
12A4200A0502	1	VALVES, SOLENOID, JACKES EVANS, 5/8" EXTENDED ENDS (X-valve) For air-cooled HE10 units only
12A4199V05	1	REPAIR KIT #76753 FOR JE #RB15MS5 (5/8") VALVE
12A4200A0707	1	7/8" SOLENOID VALVE, SPORLAN MB25 W/COIL (X-valve) For air-cooled HE20, 30, & 40 units only
12A2105C16	1	COIL, #MKC-2 FOR SPORLAN 208/240V-50/60HZ
12A4199V39	1	REPAIR KIT #KSB25/E25 FOR SPORLAN ME25S
12A4199V07	1	REPAIR KIT #76754 FOR JE #RB21MS7 (7/8") VALVE
126232RB	1	COIL #R-23MM W/HOUSING 208/240 for JACKES-EVANS
12A3025S04	1	OIL SEPARATOR, TEMPRITE #903, 7/8" ODC
12A4200G0204	1	VALVES, 214-4S 1/4ODC SUPERIOR Oil Return Stop Valve

Ice Spreader Kit

<u>Part Number</u>	<u>Req'd</u>	<u>Description</u>
12A2900M	1	MOTOR, 1/6 HP FOR ICE SPREADER
12A4099S04	1	DRIVE PULLEY, 1-1/2" DIAMETER, 1/2" BORE
12A4099S03	1	DRIVEN PULLEY, 4-1/2" DIAMETER, 1/2" BORE
12A2030B05	1	BELT, #535-5M-15 HE (90) ICE SPREADER
12A2020M01	1	BEARING, PART #SSR8-2RS 1/2" B

HEB Series Parts List

Ice Spreader Kit (Con'd)

<u>Part Number</u>	<u>Req'd</u>	<u>Description</u>
12A2020M05	1	BEARING, SPACER FOR ICE SPREAD
12A2020M06	1	BEARING, POBCO #BBU-10-SS TRIM
12A4135PS07	1	ICE DISTRIBUTOR (MODIFIED 6" TEE)
12A2240A1111	2	NUT, HEX 1/2"-13NC S.S.
12A2250B111	2	WASHER, LOCK 1/2" SS (300 SERIES)
12A2032B08	1	BINMASTER, CONTROL, BINDICATOR
12A2032B05	1	BINMASTER MOUNTING FLANGE, SS WITH GASKET
12A2032B06	1	BINMASTER, PADDLE PART #730-0005 SS
12A7500E2	2	SWITCH CHERRY #E72-40A SPDT WA

Casings

<u>Part Number</u>	<u>Req'd</u>	<u>Description</u>
12A2080C01	1	CASING, HEC LOWER FRONT
12A2080C02	1	CASING, HEC UPPER FRONT
12A2080C03	1	CASING, HEC UPPER REAR
12A2080C04	1	CASING, HEC LOWER REAR
12A2790L05	18	SOUTHCO #85-11-960-20 1/4 TURN STUD
12A2790L06	18	SOUTHCO #85-47-101-20 CLIP ON RECEPTACLE
12A2790L07	18	SOUTHCO # 85-46-101-39 THERMOPLASTIC WASHER
12A2790L08	18	SOUTHCO # 85-34-201-20 RETAINER
12A3000D27	1	NAMEPLATE, "VOGT TUBE-ICE"

Goldenrod Water Treatment

<u>Part Number</u>	<u>Req'd</u>	<u>Description</u>
12A2195W0501	1	GOLDENROD WATER TREATMENT, 5" - 13 GPM - NSF
12A2195W0502	1	REPLACEMENT GOLDENROD CELL, 5"
12A2195I01	2	INSULATOR, DELRON FOR 5", 9", OR 12" GOLDENROD
12A2195W0504	1	DELRON THREADED PLUG FOR GOLDENROD

Contactor/Relay Cross Reference

Furnas						Cutler-Hammer						Allen Bradley					
Contactor			Aux Contacts			Contactor			Aux Contacts			Contactor			Aux Contacts		
Vogt #	Furnas #	Desc	Vogt #	Furnas #	Desc	Vogt #	Cutler-Hammer #	Desc	Vogt #	Cutler-Hammer #	Descr	Vogt #	Allen Bradley #	Desc	Vogt #	Allen Bradley #	Descr
12A7516E01	45CA20AG	2 pole 20 Amp	N/A	N/A	N/A	12A7516E09	CE15BNY1	2 pole 10 Amp	N/A	N/A	N/A	12A7516E23	100-C09L10	3 pole (N.O. aux) 9 Amp	N/A	N/A	N/A
N/A	N/A	N/A	N/A	N/A	N/A	12A7516E10	CE15ENY1	3 pole 25 Amp	12A7518E15	C320KGS3	1-N.C. / 1-N.O.	12A7516E26	100-C23L01	3 pole (N.C. aux) 23 Amp	12A7518E30	100-SA11	1-N.C. / 1-N.O.
N/A	N/A	N/A	N/A	N/A	N/A	12A7516E13	CE15DN3Y2BB	3 pole 18 Amp	12A7518E20	C320KGS2	1-N.C.	12A7516E26	100-C23L01	3 pole (N.C. aux) 23 Amp	N/A	N/A	N/A
N/A	N/A	N/A	N/A	N/A	N/A	12A7516E14	CE15NN3B	3 pole 140 Amp	N/A	N/A	N/A	12A7516E31	100-B110NL3	3 pole 110 Amp	12A7518E34 12A7518E35	195-GA11 195-GA20	1 - N.O./1-N.C. 2 - N.O.
12A7516E03	40FP32AA	3 pole with 1 N.O. aux contact	12A7518E04 12A7518E14	49AAFO 49AAFC	1- N.O. (2 Req) 1-N.C.	* 12A7516E16	CE15HN3BB	3 pole 44 Amp	12A7518E15 12A7518E16	C320KGS3 C320KGS4	1- N.O./1-N.C. 2-N.O.	12A7516E29	100-C43L10	3 pole (N.O. aux) 43 Amp	12A7518E30 12A7518E31	100-SA11 100-SA20	1- N.O./1-N.C. 2 - N.O.
12A7516E05	42BF25AG (42BE25AG)	4 pole 30 Amp Definite Purpose	12A7518E08 12A7518E09	49D22125001 49D22125002	1- N.O. 1-N.C.	**12A7516E17	C25END430B	4 pole 30 Amp Definite Purpose	12A7518E15	C320KGS3	1- N.O./1-N.C.	12A7516E28	100-C37L10	3 pole (N.O. aux) 37 Amp	12A7518E30	100-SA11	1- N.O./1-N.C.
12A7516E02	41NB20AGM	2 pole 25 Amp Definite Purpose	N/A	N/A	N/A	12A7516E18	C25DND325B	3 pole 25 Amp Definite Purpose	N/A	N/A	N/A	12A7516E26	100-C23L01	3 pole (N.C. aux) 23 Amp	N/A	N/A	N/A
12A7516E06	41NB30AGM	3 pole 25 Amp Definite Purpose	N/A	N/A	N/A	12A7516E18	C25DND325B	3 pole 25 Amp Definite Purpose	N/A	N/A	N/A	12A7516E26	100-C23L01	3 pole (N.C. aux) 23 Amp	N/A	N/A	N/A
N/A	N/A	N/A	N/A	N/A	N/A	12A7516E22	CE15KN3B	3 pole 73 Amps	12A7518E15 12A7518E16 12A7518E21	C320KGS3 C320KGS4 C320KGT4	1- N.O./1-N.C. 2-N.O. (side) 2-N.O. (top)	12A7516E30	100-C72L00	3 pole 72 Amps	12A7518E30 12A7518E31 12A7518E32	100-SA11 100-SA20 100-FA20	1- N.O./1-N.C. 2 - N.O. (side) 2 - N.O. (top)
12A7517E15	46US22G	2 N.O. 2 N.C.	N/A	N/A	N/A	12A7517E18	D15CRY1	2 N.O. 2 N.C.	N/A	N/A	N/A	12A7516E43	100-C09L200	2 N.O. 2 N.C.	N/A	N/A	N/A
12A7517E16	46US31G	3 N.O. 1 N.C.	N/A	N/A	N/A	12A7517E20	D15CRY3	3 N.O. 1 N.C.	N/A	N/A	N/A	12A7516E43	100-C09L200	2 N.O. 2 N.C.	12A7518E30	100-SA11	1-N.C. / 1-N.O.

Note: * Contactor structured with Aux Contacts (CH#: C320KGS3 - 1 N.O. / 1 N.C. and CH#: C320KGS4 - 2 N.O.)

** Contactor structured with Aux Contact (CH#: C320KGS3 - 1 N.O. / 1 N.C.)

Revision: 2/15/99

Model 9000 - compressor contactor - Allen Bradley 702D0H93 has replaced with 500D0H930 (NEMA 3)

Where Used Listing - Contactors/Relays

Vogt # (Furnas)	Where Used	Notes	Vogt # (Cutler-Hammer)	Vogt # (Allen-Bradley)
12A 7516E01	Fan Contactor - M1500-M4000, HE B-series, HE C-series Power Failure - M1500-M4000, HE B-series Pump Contactor - HE C-Series Cutter Contactor - HE C-Series Bin Control - (B)P118F / P218F Power Failure - (B)P118F / P218F, (C)P118F, P18XT, P112F	12A7516E11 (3 pole) can be used	12A 7516E09	12A7516E23
N/A	Fan Contactor - (B)P118F, (C)P118F, P18XT, P112F	Requires 1 N.C. / 1 N.O. Aux Contact	12A 7516E10	12A7516E26
N/A	Compressor Contactor - HE C-series	Requires 1 N.C. Aux Contact	12A 7516E13	12A7516E26
N/A	Compressor Contactor - HES-series		12A 7516E13	12A7516E26
N/A	Compressor Contactor - P18XT	Requires 1 N.C. / 1 N.O. Aux Contact and 2 N.O. Aux Contact (side mount) and 2 N.O. Aux Contact (top mount)	12A 7516E14	12A7516E31
12A 7516E03	Compressor Motor Contactor - M6000-M9000, (B)P118F / P218F	Requires 3 N.O. - 1 N.C. Aux Contact	12A 7516E16	12A7516E29
12A 7516E05	Compressor Contactor - HE B-series Control Contact - HE B-Series * Control Contact - M1500-M4000, M6000-M9000 Compressor Contactor - M1500-M4000	Requires 1 N.C. / 1 N.O. Aux Contact Requires 1 N.O. Aux Contact No Aux Contact Required No Aux Contact Required	12A 7516E17	12A7516E28
12A 7516E06	Fan Contactor - Old (B)P118F / P218F (3 pole)	Definite Purpose contact	12A 7516E18	12A7516E26
12A 7516E02	Fan Contactor - M6000-M9000 (2 pole)			
12A 7517E15	Reversing Relay - M1500-M9000, HE B-series, HE C-Series, HE S-Series Control Relay - (B)P118F / P218F, (C)P118F, P18XT, P112F		12A 7517E18	12A7516E43
12A 7517E16	Control Relay - M1500-M9000, HE B-series (3 N.O./1 N.C.) Control Contact - M1500-M4000, M6000-M9000 (3 N.O.)	Stock Potter/Brumfield for M-series machine (12A7517E08)	12A 7517E20	12A7516E43
N/A	Compressor Contactor - (C)P118F, P112F	Requires 1 N.C. / 1 N.O. Aux Contact and 2 N.O. Aux Contact (side mount) and 2 N.O. Aux Contact (top mount)	12A 7516E22	12A7516E30

*Note: Stock Potter/Brumfield for direct replacement

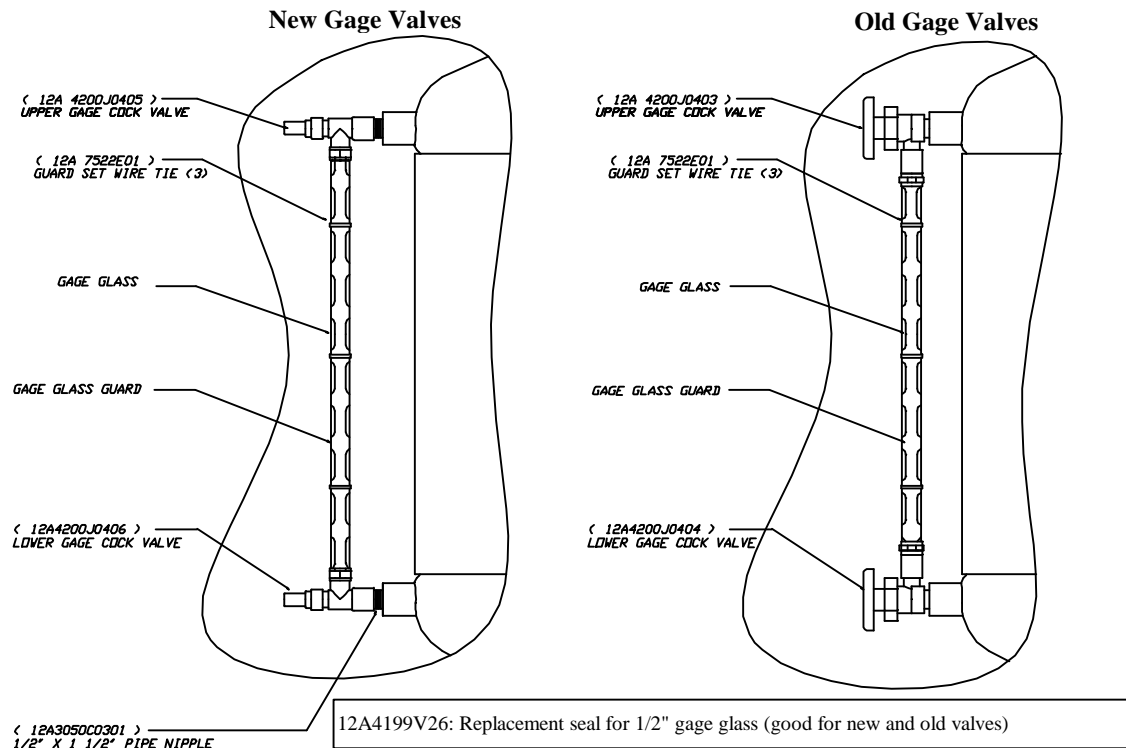
Revision: 7/9/98

Gage Cock Valves / Sightglass / Gage Guards

Date: 10/06/99

	Machine	Old		New	
Valve	All Machines	12A4200J0403	Upper Valve (# 6022)	12A4200J0405	Upper Valve (# 5022)
		12A4200J0404	Lower Valve (# 6021)	12A4200J0406	Lower Valve (# 5021)
Gage Glasses & Guards	HE, P112, P118	12A2625G08	Glass - 18 7/8" (PS95-127)	12A2625G10	Glass - 20"
		12A2635G07	Guard - 17 5/8" (PS94-126) / (set of 2)	19T2635G07	Guard - 18 5/8" / (set of 2)
	P18XT	12A2625G02	Glass - 27 1/8"	12A2625G11	Glass - 28 3/8"
		12A2635G06	Guard - 28" (PS94-209) / (set of 2)	19T2635G06	Guard - 27 1/4" / (set of 2)
	P24, P34	12A2625G05	Glass - 29"	12A2625G11	Glass - 28 3/8"
		12A2635G06	Guard - 28" (PS94-209) / (set of 2)	19T2635G06	Guard - 27 1/4" / (set of 2)
	1500, 1800, 3000	12A2625G01	Glass - 10 3/16"	12A2625G0101	Glass - 11 5/16"
		12A2635G01	Guard - 8 3/4" / (set of 2)	19T2635G07	Guard - 18 5/8" (Cut to 10 3/16" / (set of 2))
	2500, 4000, 6000, 7000, 9000	12A2625G06	Glass - 15 1/8"	12A2625G0601	Glass - 16 1/4"
		HE's before 1991	12A2635G02	Guard - 13 3/4" (PS94-97) / (set of 2)	19T2635G07

Note: If changing from the old style valve to the new gage valve, a 1/2"X1 1/2" (12A3050C0301) pipe nipple must be used to connect the valve to the receiver
 12A2635G06 - Gage Guard 60"length # PS94-342 (was 28")



Cross Reference

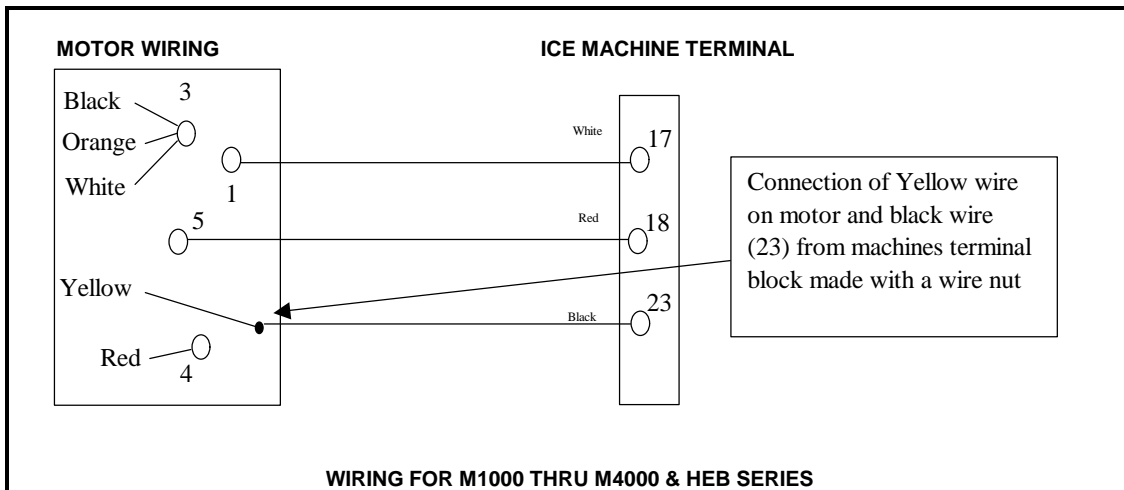
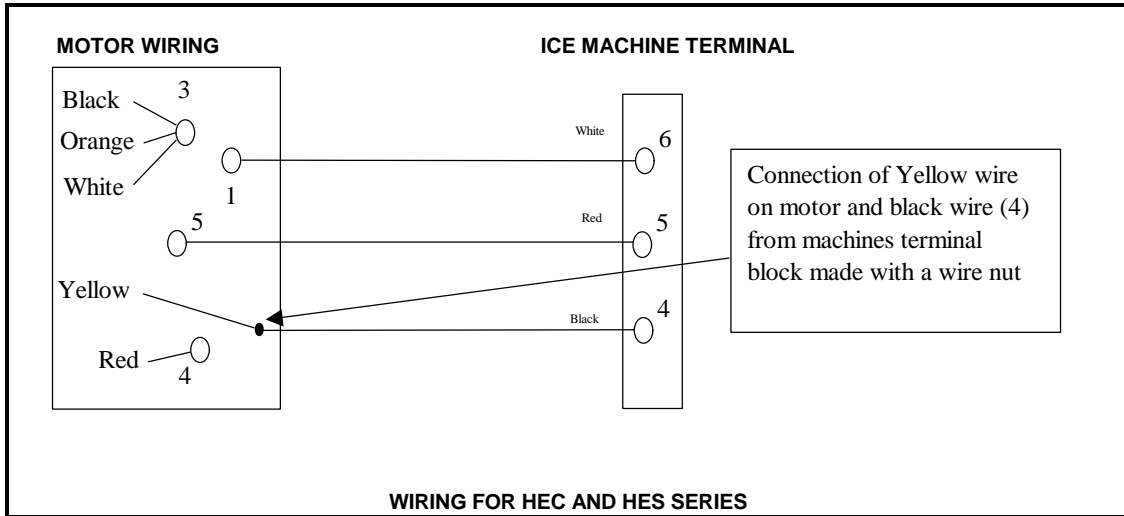
Revision Date: 7/14/98

Solenoid Valves

		Jakes-Evans				Sporlan			
		Valve		Rebuild Kit		Valve		Rebuild Kit	
Where Used	Size	Vogt Part #	Model #	Vogt #	Part #	Vogt Part #	Model #	Vogt #	Part #
X-valve (P18F's)	1 5/8"	N/A	N/A	N/A	N/A	12A 4200A1103	ME42S2130	12A 4199V28	KS-E42
Kramer Air cooled condenser - HDD-590 (Normally Open)	1 5/8"	N/A	N/A	N/A	N/A	12A 4200A1104	OE42S2130	12A 4199V47	KS-OE42
Kramer Air cooled condenser - HDD-311 & 361 (Normally Open)	1 3/8"	N/A	N/A	N/A	N/A	12A 4200A1102	OE34S2110	12A 4199V45	KS-OE34
D-valve (B-Series P118F's)	1 3/8"	N/A	N/A	N/A	N/A	12A 4200A1101	ME42S2110-20	12A 4199V28	KS-E42
Kramer Air cooled condenser - HDD-131 (Normally Open)	1 1/8"	N/A	N/A	N/A	N/A	12A 4200A0902	OE34S290	12A 4199V45	KS-OE34
SS-valve (HES) with bypass									
X-valve (B-Series P118F's)	1 1/8"	12A 4200A0901	RB41MS9	12A 4199V10	76757	N/A	N/A	N/A	N/A
X-valve (C-Series P118F's)	1 1/8"	12A 4200A0903	RB41ME9	12A 4199V10	76757	12A 4200A0904	ME34S290	12A 4199V46	KS-E34
D-valve & X-valve (6000)									
Not Used	1 1/8"	N/A	N/A	N/A	N/A	12A 4200A0905	ME25S290	12A 4199V39	KS-B25/E25
Kramer Air cooled condenser - HDD-101 (Normally Open)	7/8"	N/A	N/A	N/A	N/A	12A 4200A0704	OE25S290	12A 4199V44	KS-OB25/OE25
D-valve & X-valve (Early HEB-30's & HEB-40's)	7/8"	12A 4200A0701	RB21MS7	12A 4199V07	76754	N/A	N/A	N/A	N/A
X-valve (M2500, M3000 & M4000)									
D-valve & X-valve (HE-30's & HE-40's)	7/8"	12A 4200A0702	RB21ME7	12A 4199V07	76754	12A 4200A0705	ME25S270	12A 4199V39	KS-B25/E25
D-valve (Small machines before 1982)	7/8"	----	B6MS & B6MS7	12A 4199V06	76642	N/A	N/A	N/A	N/A
Kramer Air cooled condenser - HDD-61 (Normally Open)	5/8"	N/A	N/A	N/A	N/A	12A 4200A0503	OE14S250	12A 4199V42	KS-OB14/OE14
X-valve (HEB-10's)	5/8"	12A 4200A0501	RB15S5	12A 4199V05	76753	12A 4200A0501	MB19S2	12A 4199V43	KS-B19/E19
D-valve & X-valve (1500 & 1800)			(changed part to Sporlan)						
6000 & 9000 TXV conversion kit									
X-valve (HE-20's)	5/8"	12A 4200A0502	RB9ME5	12A 4199V02	76750	12A 4200A0504	ME14S250	12A 4199V38	KS-B14/E14
D-valve (early M1500's & M1800's)	5/8"	----	B4MS & B4MS5	12A 4199V04	76641	N/A	N/A	N/A	N/A
Flush valve & Compressor heads (24's & 34's)	3/4"	12A 4200A0602	GP607	N/A	N/A	12A 4200A0607	KBR246P1	12A 4199V48	KS-BR24
Flush valve (P18 - Used before vaccumm break valve)	3/4"	12A 4200A0603	12F23C2148ACF	N/A	N/A	N/A	N/A	N/A	N/A
A-valve (Small machines before 1982)	1/2"	----	B3MS4	12A 4199V01	76640	N/A	N/A	N/A	N/A
A-valve (Early HEB's)	1/2"	12A 4200A0402	RB9MS4	12A 4199V02	76750	N/A	N/A	N/A	N/A
A-valve (HE's)	1/2"	12A 4200A0403	RB9ME4	12A 4199V02	76750	12A 4200A0404	ME9S240	12A 4199V37	KS-B9/E9
A-valve & TC-valve (HE Lowside)	1/2"								
A-valve (P24F's & P24FL's)	1/2"	12A 4200A0401	200RB5S4-M (Alco)	12A 4199V49	KS30115				
Flush valve (P118F Crushed Ice)	3/8"	12A 4200A0302	201WB06P03 (Alco)	12A 4199V50	K1112	12A 4200A0303	W6P1	N/A	N/A
Vaccumm break (P18's & Von's)	1/4"	12A 4200A0202	04F2002118ACFGC	N/A	N/A	12A 4200A0203	EV1-3-NO (Danfoss)	N/A	N/A

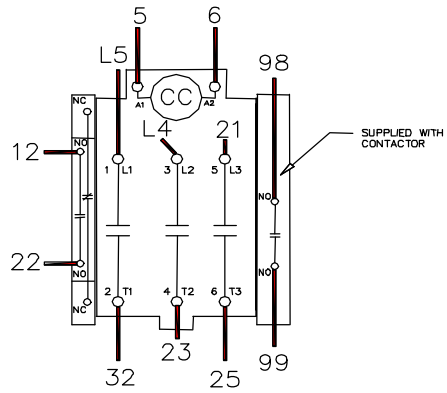
Solenoid valve coils: Sporlan N.C. (MKC-2) - 12A2105C16
 Sporlan N.O. (OMKC-2) - 12A2105C04
 Jakes-Evens N.C. (R-23MM) - 126232RB

Wiring Diagrams for 1/2HP Cutter Motor (Single Phase)



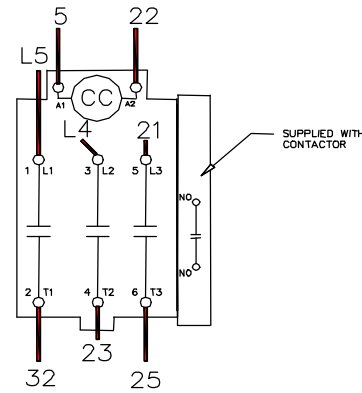
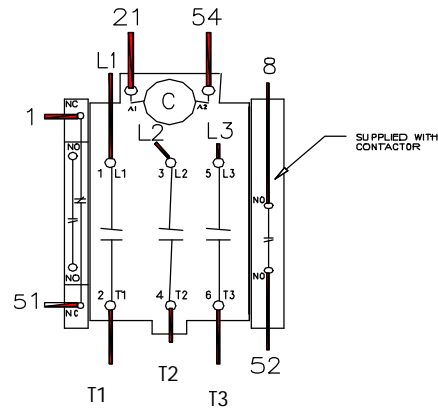
Allen-Bradley Compressor Motor/CC Contactor Wiring

12A7516E28 - 3 POLE W/1NO



NOTE: REQUIRES 12A7518E30
1NO/1NC AUX CONTACT

B-SERIES HE

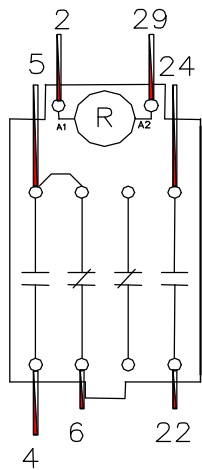


M-SERIES
R12

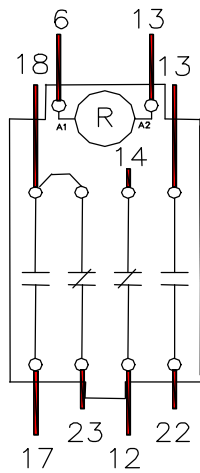
REPLACES 12A7516E05 (FURNAS) & 12A7516E17 (CUTLER-HAMMER)

Allen-Bradley Reversing Relay/CR Relay Wiring

12A7516E43 – 2NO/2NC MOTOR RATED CONTACTS



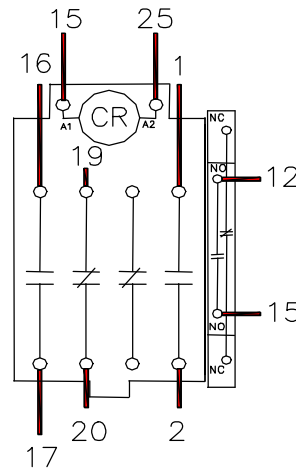
C-SERIES
HE



B-SERIES HE &
M-SERIES R12

REPLACES 12A7517E08 (POTTER-BRUMFIELD), 12A7517E15 (FURNAS)
& 12A7517E18 (CUTLER-HAMMER)

12A7516E43 – 2NO/2NC MOTOR RATED CONTACTS



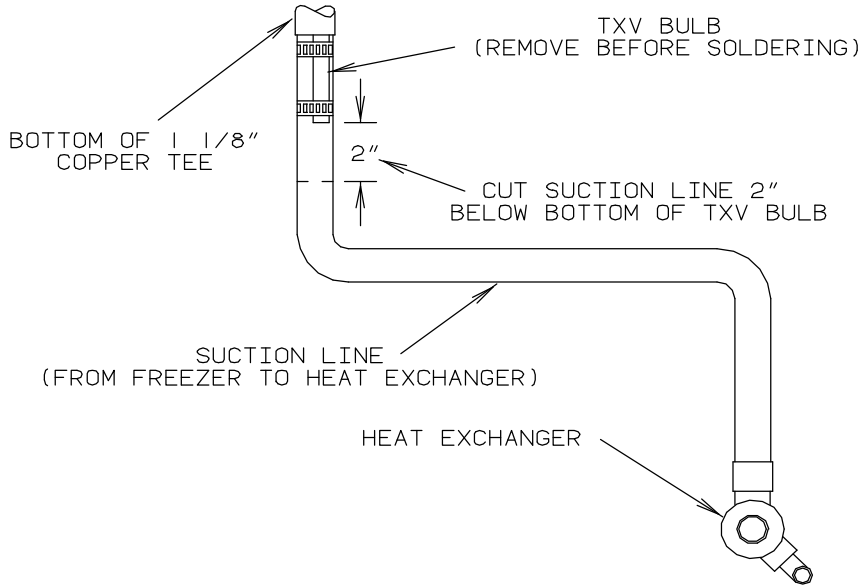
B-SERIES HE &
M-SERIES R12

REPLACES 12A7517E16 (FURNAS) & 12A7517E20 (CUTLER-HAMMER)

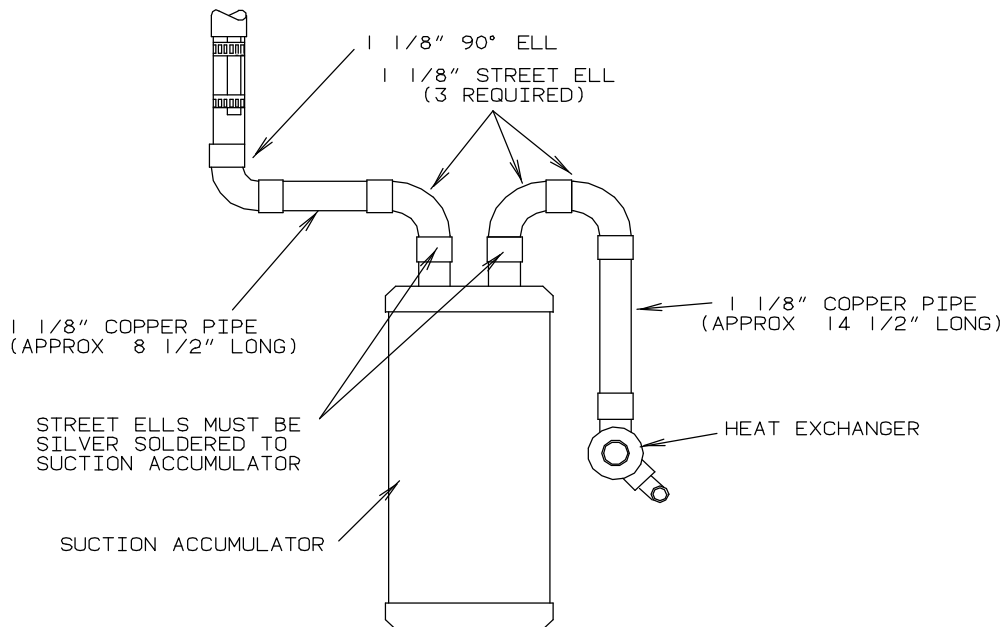
NOTE: REQUIRES 12A7518E30
1NO/1NC AUX CONTACT

Adding Suction Accumulator to HE

BEFORE



AFTER



THAWING TIMER WIRING INSTRUCTIONS

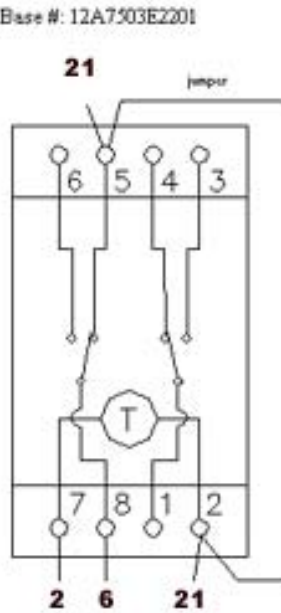
Part # 12A7503E22

1sec to 100hrs

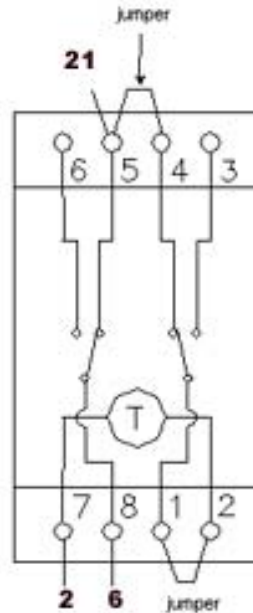
24-240VAC, 50/60hz, delay on make timer, DPDT

8 pin plug-in timer

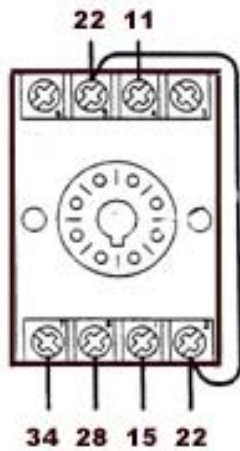
Note: Timer Base #: 12A7503E2201



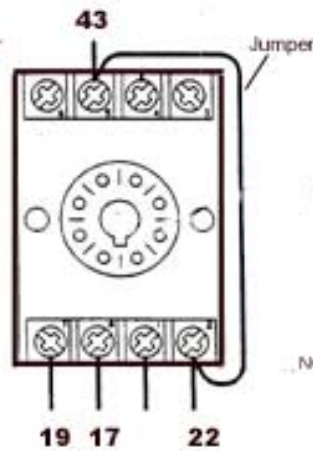
HE B-Series



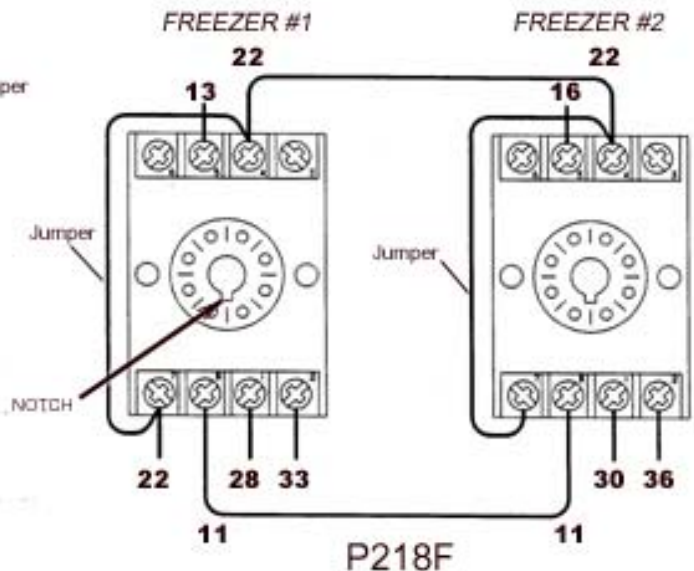
M1500-M9000 Series (R-12)



P118F
(B-Series)



P24-P34



NOTES: MAKE SURE NOTCH IS POINTING DOWNWARD
USE JUMPER ONLY IF PREVIOUS TIMER HAD JUMPER

12A7503E22 - Harvest / Thaw Timer (Delay on Make)



Power Light (green)
 Light blinks while "timing"
 Light solid when "timed out"

Harvest Time adjustment dial
 Set between 2 and 3 (min)
 Note: If more than 3 minutes
 required, change Range to 0-12

Up Light (red)
 Light off while "timing"
 Light solid when "timed out"

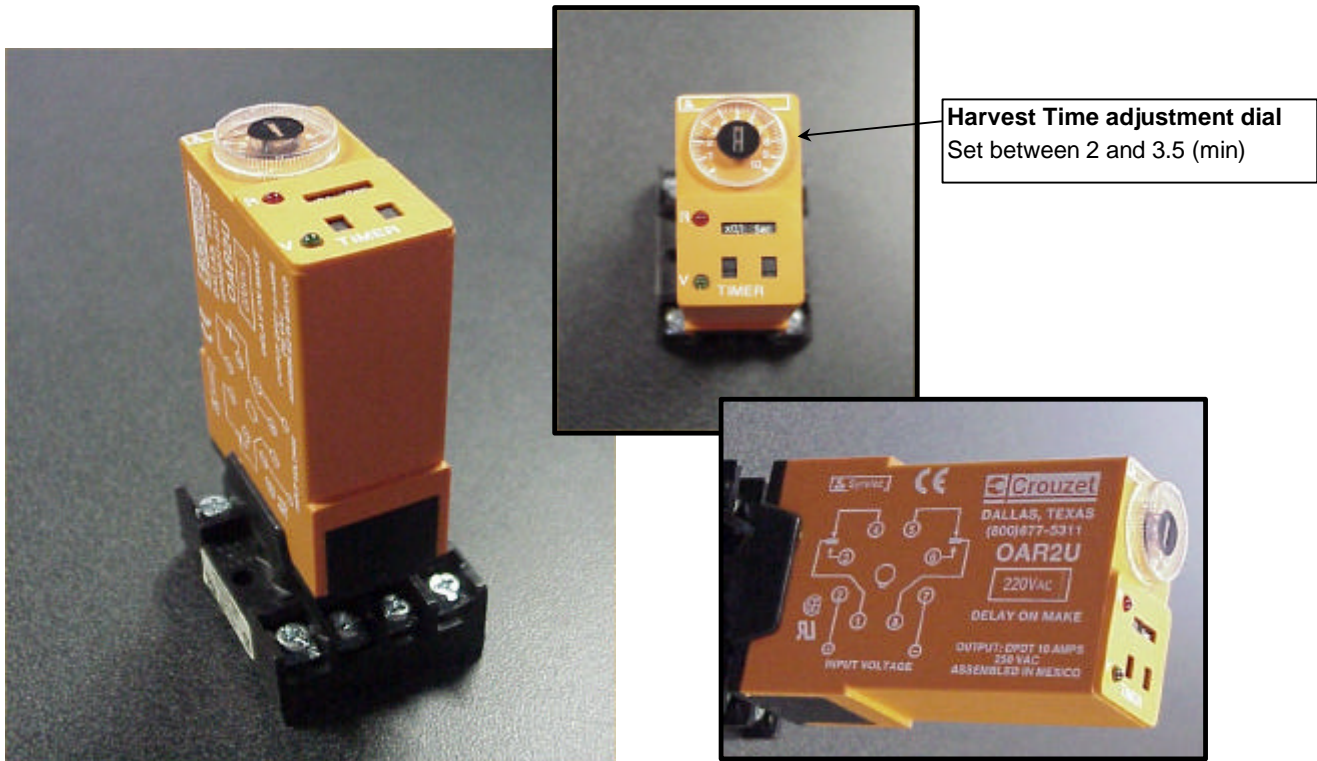


Time Range adjustment
 0 - 1.2
 0 - 3
 0 - 12
 0 - 30

Unit adjustment
 sec
 min
 hrs
 10h



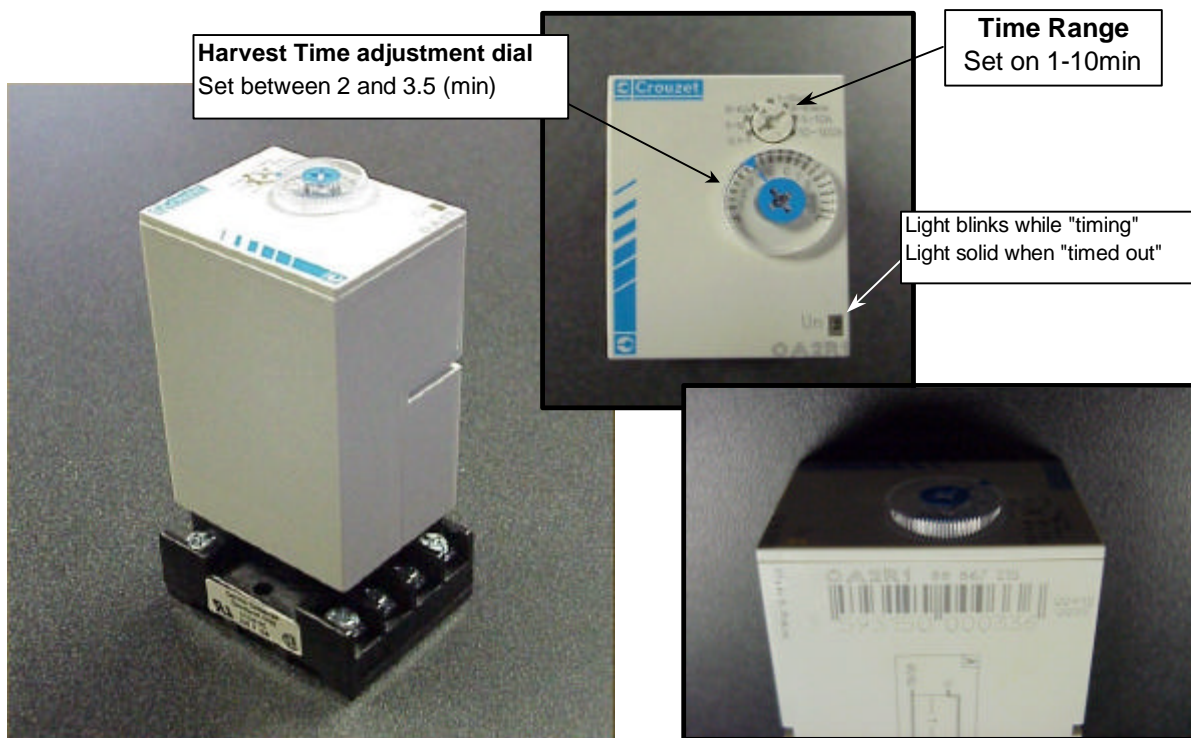
Allen-Bradley - 100-240VAC, 50/60hz, Delay on make timer, DPDT
 Part # 700-HRM12TA17



Old Crozet version - 220VAC & 110VAC, 50/60hz, Delay on make timer, DPDT

Part #: OAR2U 220A (220VAC version)

Part #: OAR2U 110A (110VAC version)



New Crozet Version - 24-240VAC, 50/60hz, Delay on make timer, DPDT

Part # 88 887 215

Note: New timer is a direct replacement; wiring and operation are same

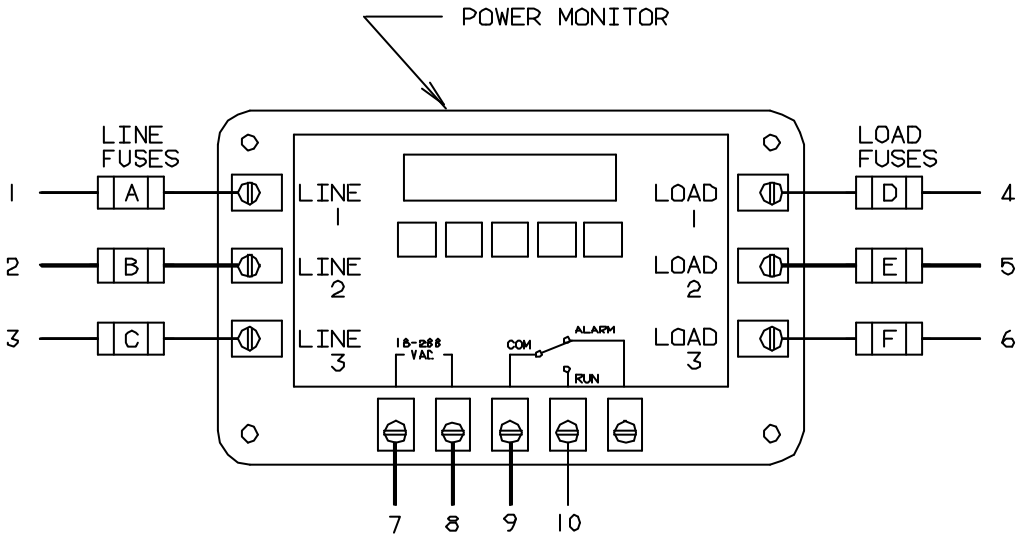
HE “B” Series

Power Monitor Kit, Vogt #12A-7700K01000000

Fuses, Vogt #12A-7504E20000000 (200-230V Machines)

Fuses, Vogt #12A-7504E29000000 (400-460V Machines)

Wiring Instructions



(Step 1) Connect Power Monitor wires 1,2,3 to Compressor Contactor (C) terminals L1,L2,L3.

(Step 2) Connect Power Monitor wires 4,5,6 to Compressor Contactor (C) terminals T1,T2,T3.

(Step 3) Connect Power Monitor wire 7 to Terminal Block (TB) terminal 1.

(Step 4) Connect Power Monitor wire 8 to Terminal Block (TB) terminal 21.

(Step 5) Add new Terminal Block terminal to Terminal Block Assembly (TB).

(Step 6) Remove Dual Pressure Switch wire from right side of Terminal Block (TB) terminal 3 and connect it to right side of newly added Terminal Block terminal.

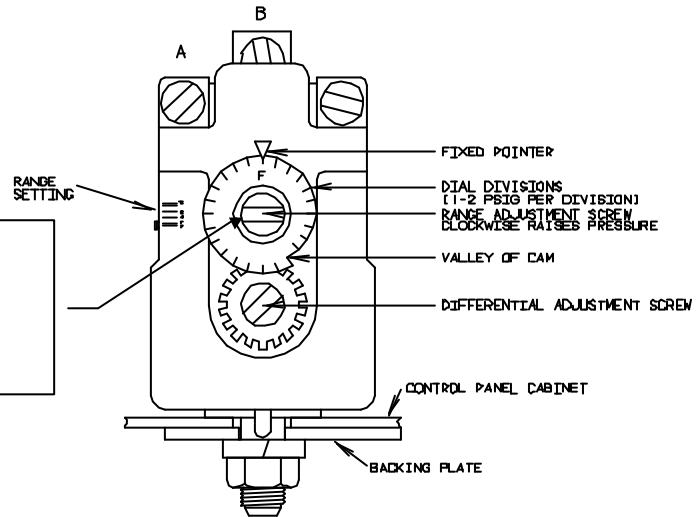
(Step 7) Connect Power Monitor wire 9 to left side of newly added Terminal Block terminal.

(Step 8) Connect Power Monitor wire 10 to right side of Terminal Block (TB) terminal 3.

Vogt Part #: 12A2117E04

Turn top screw to adjust the pressure setting
(also referred to as the Range)

Clockwise = increase pressure setting (thinner ice)
Counterclockwise = decrease pressure setting (thicker ice)



Differential: 6-30 psi

F \approx 10 psi

G \approx 20 psi

Freezer Pressure Switch (Allen Bradley)