

# P34AL-15

Vogt Tube-Ice Machines



## Standard Features

- 3 Ice Sizes:  
7/8", 1 1/8", 1 3/8" diameter
- Highest Capacity:  
up to 110 tons per day
- 25 Year Lifetime Factory  
Warranty\*
- Stainless Steel Water Pump  
with TEFC Motor
- Standard Stainless Steel Shell  
(on 1" and 1 1/4" Tube Units)
- Ammonia or R22 Refrigerant
- Easily Maintained Stainless Steel  
Cutter and Water Tank
- Controls U.L. Approved

## Options

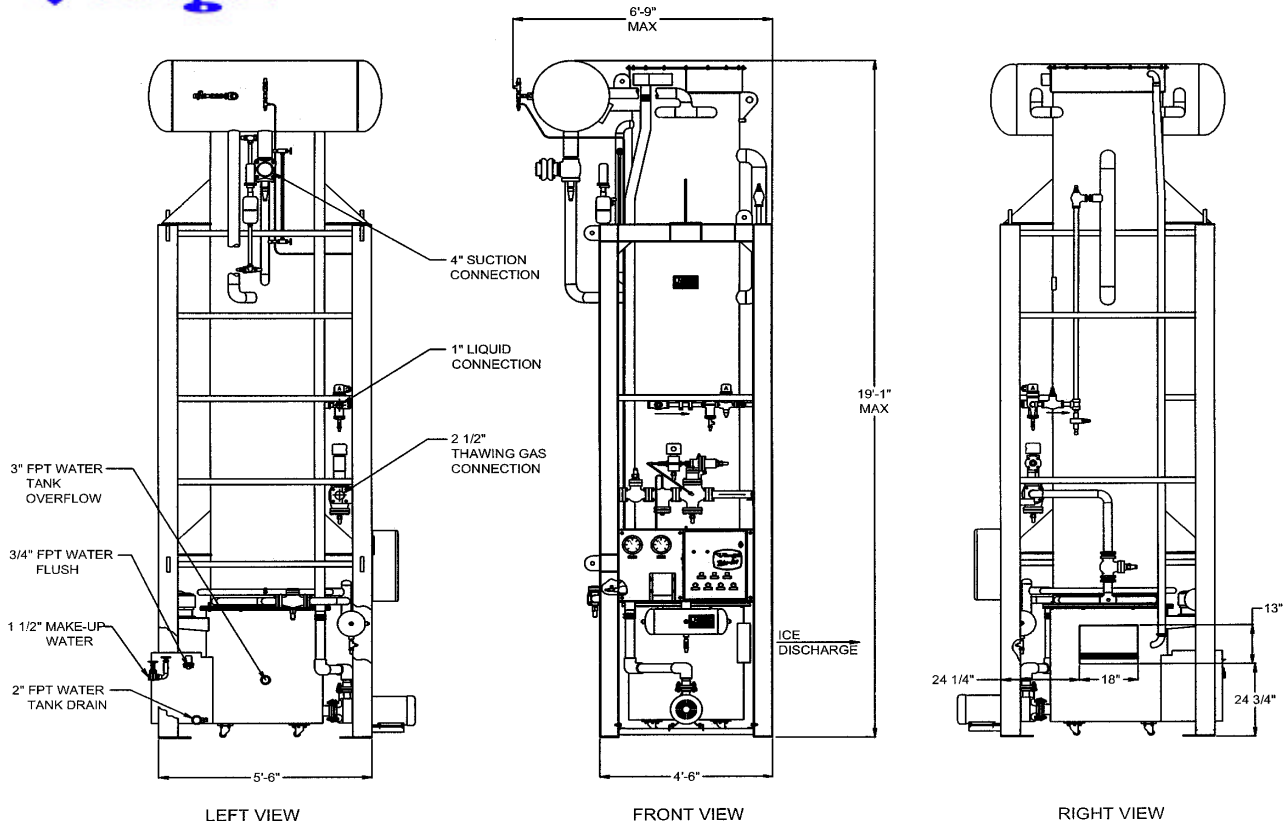
- Available as Liquid Overfeed
- All Stainless Frame
- Remote Control Panel
- Crushed Ice
- PLC Ready

\*Please see your dealer for details.

**Vogt**  
**Tube-Ice**

Vogt Ice, LLC  
1000 West Ormsby Ave., Louisville, KY 40210  
Sales: 800-853-8648, Phone: 502-635-3000  
Sales Fax: 502-634-0479  
E-mail: [info@tubeice.com](mailto:info@tubeice.com)  
Website: [www.tubeice.com](http://www.tubeice.com)

# Vogt Tube-Ice Machines



## SPECIFICATIONS

### MODEL P34AL-15 (Ammonia Refrigerant)

#### STANDARD CAPACITY, TONS PER 24 HOURS

WATER TEMP.	7/8" DIA. ICE	1 1/8" DIA. ICE	1 3/8" DIA. ICE
80 °F	73.2	70.4	53.9
70 °F	76.0	73.6	56.6
60 °F	79.1	77.1	59.5
50 °F	82.5	80.9	62.7
WEIGHT (LBS)	OPERATING: 15,400 SHIPPING: 11,700	OPERATING: 16,200 SHIPPING: 12,300	OPERATING: 16,100 SHIPPING: 12,000
STANDARD ELECTRICAL	230 V, 3P, 60 Hz - 460V, 3P, 60 Hz - 400V, 3P, 50 Hz (OPTIONAL ELECTRICAL ARRANGEMENTS ON REQUEST)		

#### CAPACITY TABLE, TONS PER 24 HOURS (AT SUCTION TEMPERATURE °F)

WATER TEMPERATURE	0			5			15			20		
	7/8"	1 1/8"	1 3/8"	7/8"	1 1/8"	1 3/8"	7/8"	1 1/8"	1 3/8"	7/8"	1 1/8"	1 3/8"
80 °F	91.8	91.7	71.5	83.1	81.6	63.1	61.7	58.0	44.0	48.3	44.3	33.2
70 °F	94.9	95.5	74.7	86.1	85.1	66.0	64.3	60.8	46.3	50.5	46.5	35.0
60 °F	98.2	99.6	78.2	89.4	88.9	69.3	67.1	63.9	48.7	53.0	49.0	36.9
50 °F	101.8	104.0	82.1	92.9	93.1	72.8	70.2	67.3	51.5	55.6	51.8	39.2

NOTE: STANDARD CAPACITY BASED ON SUCTION TEMPERATURE OF 10 °F AND AN AMBIENT (AIR) TEMPERATURE OF 90 °F

Vogt reserves the right to change designs and specifications without notice.

TUBE ICE, LLC  
1000 West Ormsby Ave.  
Suite 19  
Louisville, KY 40210

Sales: 800-853-8648  
Telephone: 502-635-3000  
FAX: 502-634-0479  
E-mail: info@vogtice.com  
Website: www.vogtice.com