

Vogt Tube - Ice machines P34A-P34F

In 1938, Vogt Ice revolutionized the ice making industry by introducing the world's first automatic sized icemaker. Today, Vogt Tube-Ice machines enjoy a well-earned reputation as the most energy efficient, dependable ice machines on the market.

Heavy-duty industrial construction, automatic operation, and the best warranty in the business make the Vogt ice machines the only "clear" choice for your ice making needs.

Three Ice Sizes Available:

- Cylinder (Tube-Ice)
 - 7/8" Diameter X 1" long
 - 1 1/8" Diameter X 1" long
 - 1 3/8" Diameter X 1" long

P34 Features:

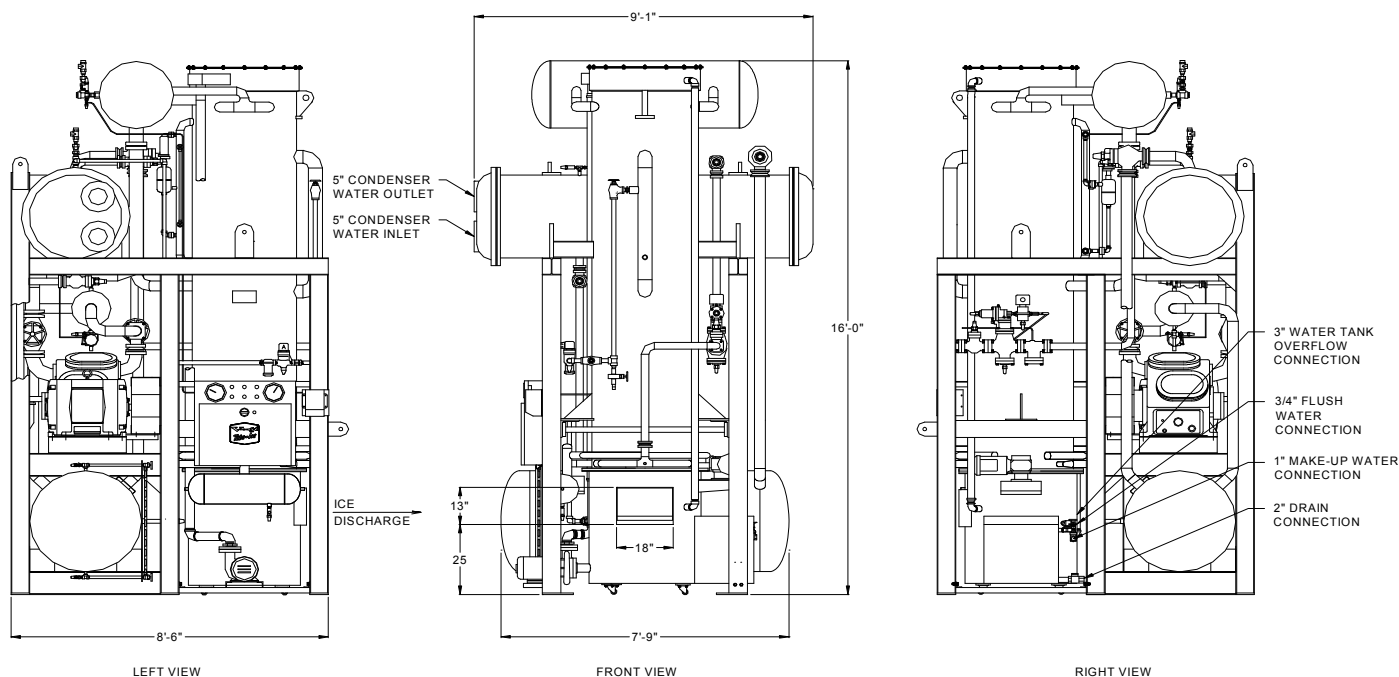
- 25 Year Life expectancy
- Up to 50 tons per day
- Self Contained Packaged Unit
- 25 Year evaporator warranty
- Stainless Steel Water Pump with TEFC Motor
- Manufactured in accordance with the A.S.M.E. code
- R404a or Ammonia Refrigerant
- Controls U.L. Approved
- Factory Tested and Certified
- High Energy Efficiency

Options:

- All Stainless Steel Construction
- PLC Controls
- Crushed Ice



Vogt® Tube-Ice Machines



SPECIFICATIONS						
	MODEL P34A (Ammonia Refrigerant)			MODEL P34F (R-404a Refrigerant)		
WATER TEMPERATURE	STANDARD CAPACITY, TONS PER 24 HOURS					
	7/8" DIA. ICE	1 1/8" DIA. ICE	1 3/8" DIA. ICE	7/8" DIA. ICE	1 1/8" DIA. ICE	1 3/8" DIA. ICE
80 °F	37.7	43.6	39.3	40.0	44.6	41.3
70 °F	39.7	46.0	41.5	42.5	47.1	43.7
60 °F	41.9	48.5	43.9	45.0	49.9	46.5
50 °F	44.4	51.5	46.7	48.0	53.2	49.5
WEIGHT (LBS)	OPERATING: 24,000 SHIPPING: 20,500	OPERATING: 24,500 SHIPPING: 21,000	OPERATING: 24,500 SHIPPING: 21,000	OPERATING: 25,500 SHIPPING: 22,000	OPERATING: 26,000 SHIPPING: 22,500	OPERATING: 26,000 SHIPPING: 22,500
STANDARD ELECTRICAL	POWER: 460V, 3P, 60 Hz CONTROLS: 230 V, 1P, 60 Hz (OPTIONAL ELECTRICAL ARRANGEMENTS ON REQUEST)					

Vogt reserves the right to change designs and specifications without notice.

Operating Conditions:

The ice machine shall not be subjected to an atmospheric temperature lower than 50°F nor higher than 90°F without effect on performance. Water for condensing and for ice making purposes shall be non-corrosive.

The water shall be at a constant pressure not less than 30 lbs. at the ice machine location. The condition of the water to make satisfactory ice shall be the responsibility of the purchaser.



Vogt Ice, LLC
 1000 West Ormsby Ave.,
 Louisville KY 40210
 Phone: 502-635-3000
 E-mail: info@vogtice.com

